

MAY 2024 HM MANNING SNAPSHOT

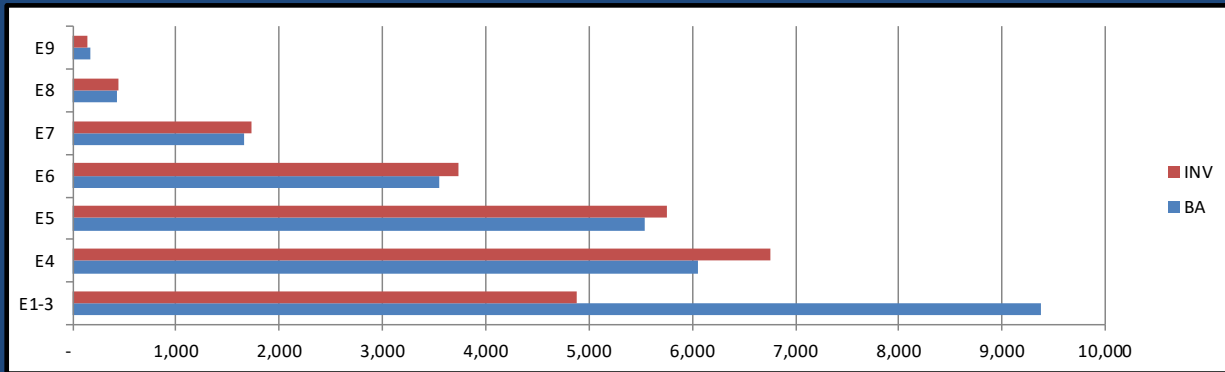
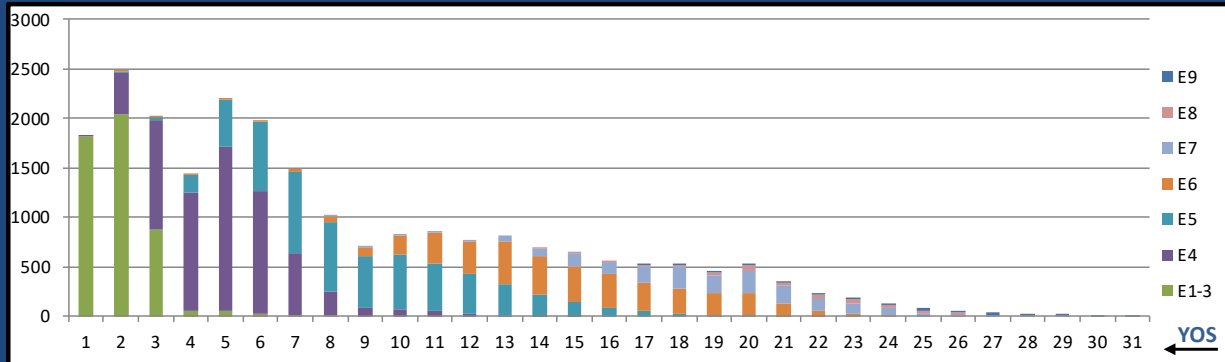
HM NEC MANNING 10 MAY 2024	NEC	BA	INV WITH PRIMARY NEC	INV/BA PRIMARY NEC	PRODUCTION NOTES	TOTAL INV W/NEC	TOTAL NEC INV/BA
SAR TECH	L00A	183	111	60.7%		113	61.7%
SUB IDC	L01A	202	179	88.6%		179	88.6%
FMF RECON IDC	L02A	273	234	85.7%		234	85.7%
FIELD MED TECH	L03A	5360	6704	125.1%		10649	198.7%
AERO MED TECH	L04A	558	572	102.5%	Train to L00A and L07A	635	113.8%
RAD HEALTH TECH	L05A	91	84	92.3%		84	92.3%
CV TECH	L06A	59	69	116.9%		84	142.4%
AERO PHYS TECH	L07A	85	55	64.7%	33 L04A also have L07A in inventory	94	110.6%
BIOMED EQ TECH	L08A	468	365	78.0%		366	78.2%
NUC MED TECH	L09A	18	25	138.9%		25	138.9%
SURFACE IDC	L10A	1223	986	80.6%		994	81.3%
PREV MED TECH	L12A	680	599	88.1%		603	88.7%
HEMO TECH	L13A	13	14	107.7%		14	107.7%
OPHTH SURG TECH	L14A	11	10	90.9%		10	90.9%
ULTRASOUND TECH	L15A	13	14	107.7%	3 Sailors Carry all L17A/L15A/L16A NECs	15	115.4%
MAMO TECH	L16A	10	7	70.0%	3 Sailors Carry all L17A/L15A/L16A NECs	9	90.0%
ADV X-RAY TECH	L17A	611	479	78.4%	Train to L15A & L16A	505	82.7%
END TECH	L18A	21	19	90.5%		19	90.5%
OPTICIAN	L19A	160	128	80.0%		132	82.5%
PT TECH	L20A	198	198	100.0%		205	103.5%
OT TECH	L21A	13	12	92.3%		12	92.3%
PHARM TECH	L22A	593	484	81.6%		490	82.6%
SURG TECH	L23A	1119	754	67.4%	Train to L14A & L25A	810	72.4%
BEHAV HLTH	L24A	554	494	89.2%		496	89.5%
UROLOGY TECH	L25A	52	59	113.5%		59	113.5%
ORTHOPEDIC TECH	L26A	140	119	85.0%		120	85.7%
DIVE MED TECH	L27A	121	88	72.7%	Train to L28A	95	78.5%
DIVE IDC	L28A	110	82	74.5%		82	74.5%
MORTICIAN	L29A	14	12	85.7%		12	85.7%
HISTO TECH	L30A	30	18	60.0%		18	60.0%
MED LAB TECH	L31A	1088	827	76.0%		827	76.0%
RES THER TECH	L32A	186	165	88.7%		165	88.7%
DENTAL ASSISTANT	L33A	1491	1516	101.7%		1558	104.5%
DENT HYGIENIST	L35A	93	57	61.3%		57	61.3%
DENT LAB BASIC	L36A	91	64	70.3%	Train to L37A	88	96.7%
DENT LAB ADV	L37A	98	81	82.7%		81	82.7%
DENT ORALMAX	L38A	8	7	87.5%		7	87.5%
DRUG & ALCOHOL COUNS. INTERN	810B	54	57	105.6%	Train to 810C 38 OTHER HM NEC'S HAVE THE 810B/810C NEC	90	166.7%
DRUG & ALCOHOL COUNSELOR	810C	106	7	6.6%	38 OTHER HM NEC'S HAVE THE 810B/810C NEC	39	36.8%

		BA	INV	INV/BA
General Duty HM	0000/L03A	15926	14384	90.3%
NECs (less L03A)		10838	9051	83.5%
NOS G000 TOTAL		26764	23435	87.6%

Critically Undermanned <85% Undermanned 85%-94% Healthy 95%-104% Overmanned >105%

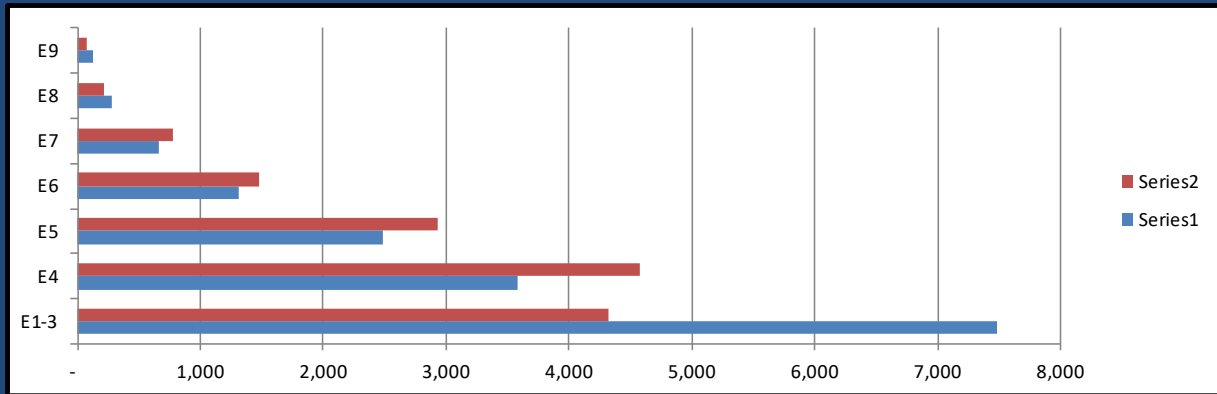
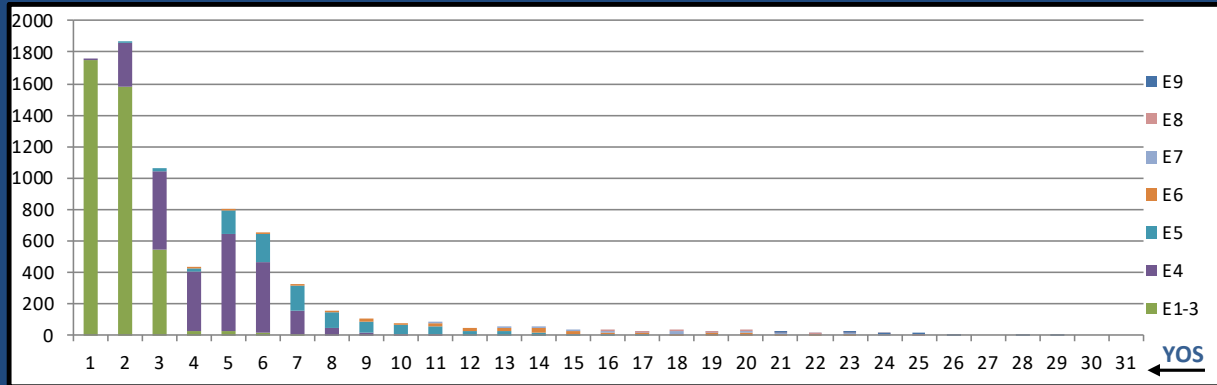
MAY 2024 HM MANNING SNAPSHOT

NOS G000-All



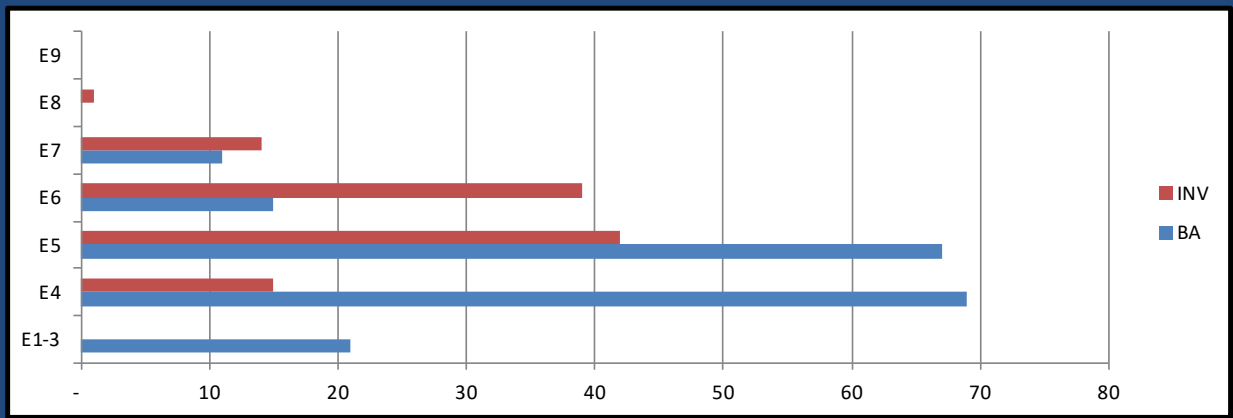
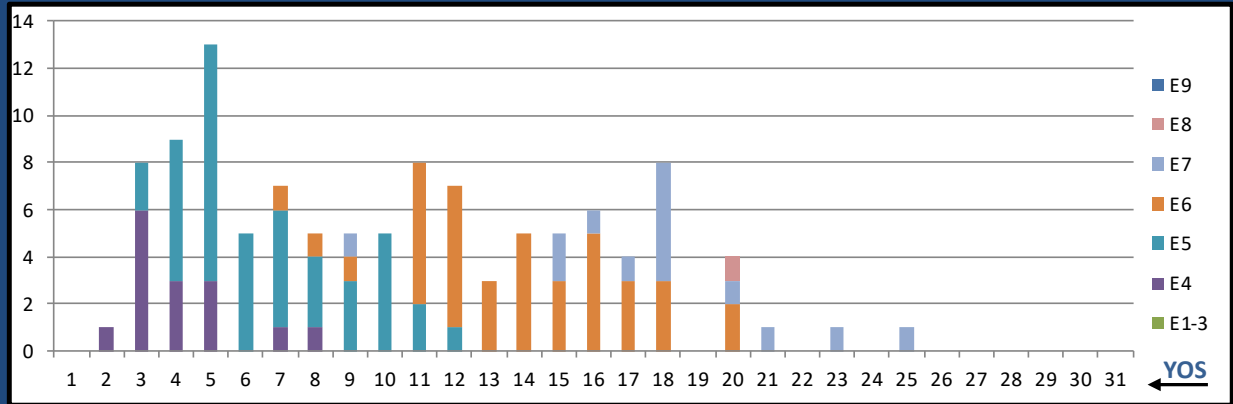
	E1-3	E4	E5	E6	E7	E8	E9	Total
%INV to BA	52%	112%	104%	105%	104%	104%	85%	88%
BA	9,377	6,050	5,538	3,550	1,661	423	165	26,764
Total Inventory	4,880	6,757	5,751	3,740	1,726	440	141	23,435
SJA Inventory	75%		104%			103%		

G000 GEN DUTY (0000/L03A)



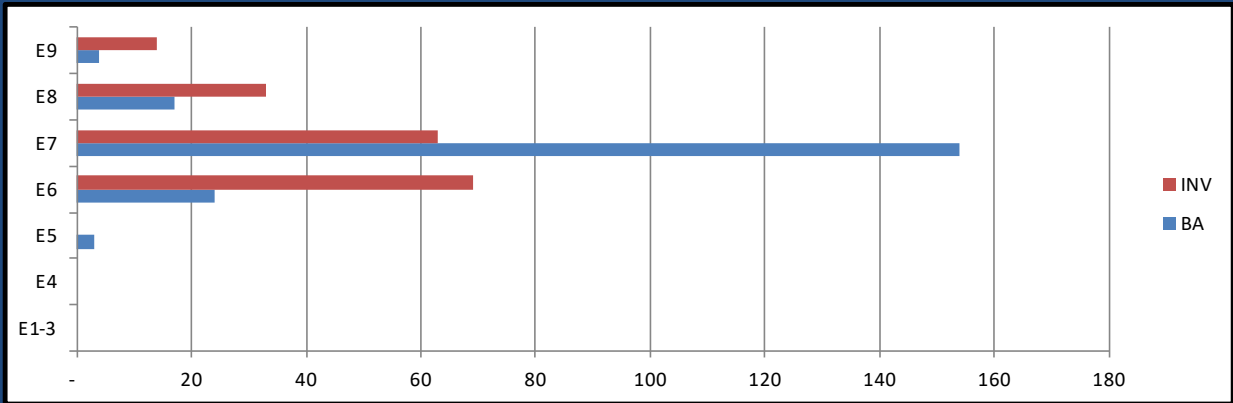
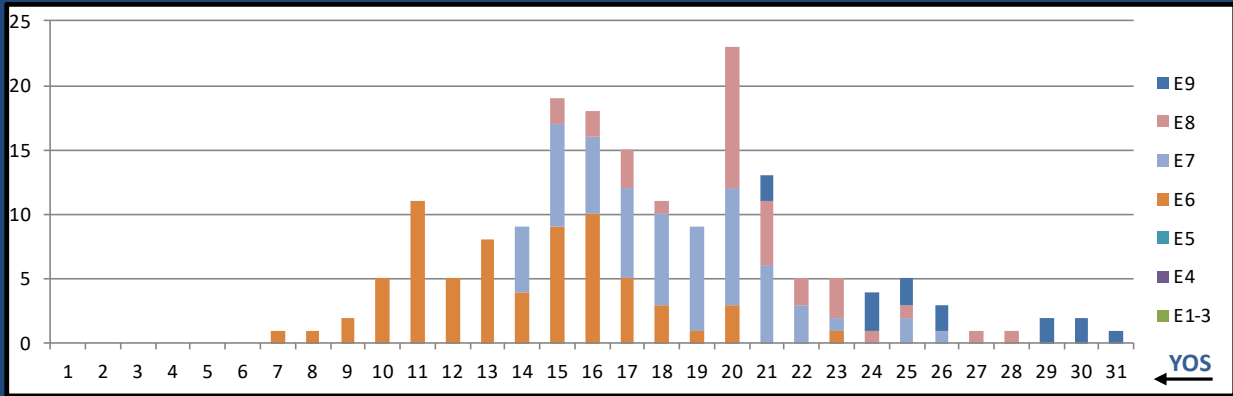
	E1-3	E4	E5	E6	E7	E8	E9	Total
%INV to BA	58%	128%	118%	112%	117%	78%	65%	90%
BA	7,479	3,580	2,487	1,315	663	275	124	15,923
Total Inventory	4,320	4,582	2,930	1,479	778	215	80	14,384
SJA Inventory	80%		116%		101%			

LOOA SAR TECH



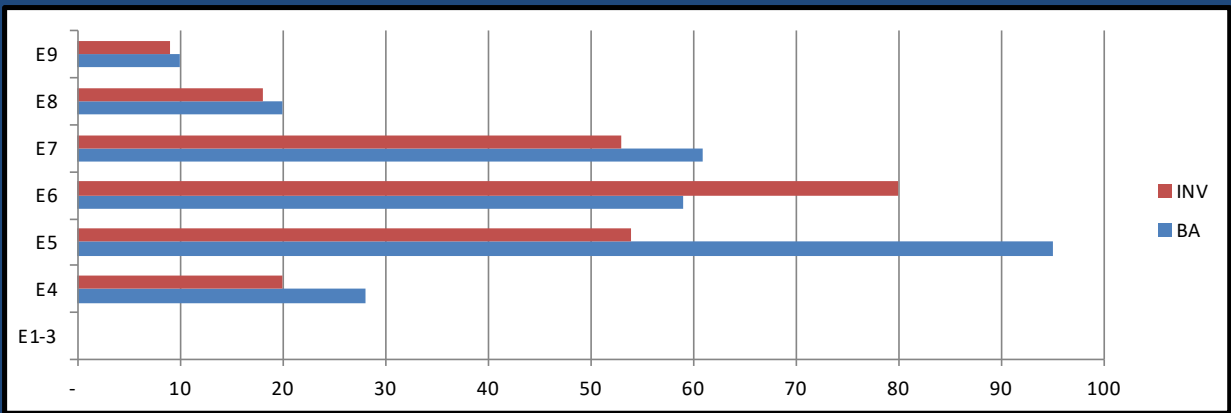
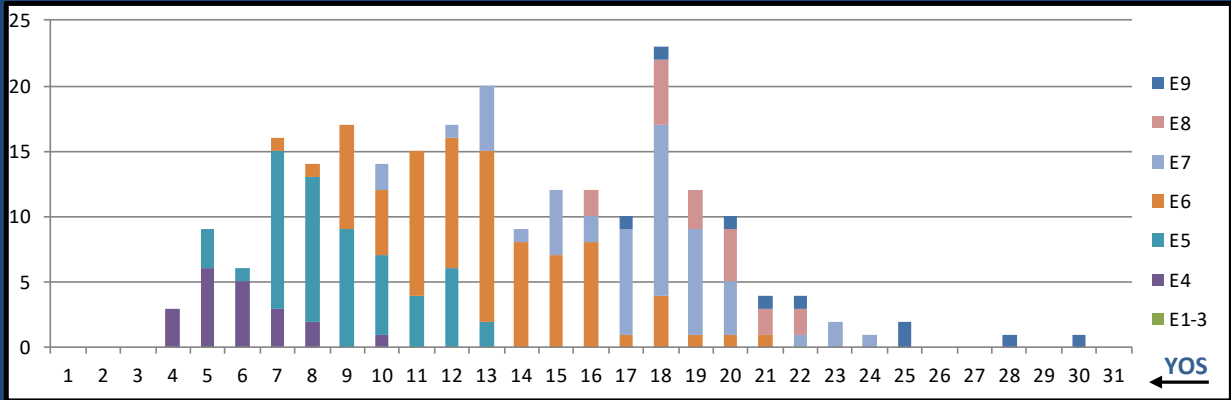
	E1-3	E4	E5	E6	E7	E8	E9	Total
%INV to BA	0%	22%	63%	260%	127%	0%	0%	61%
BA	21	69	67	15	11	-	-	183
Total Inventory	-	15	42	39	14	1	-	111
SJA Inventory	17%		99%		136%			

L01A SUB FORCE IDC



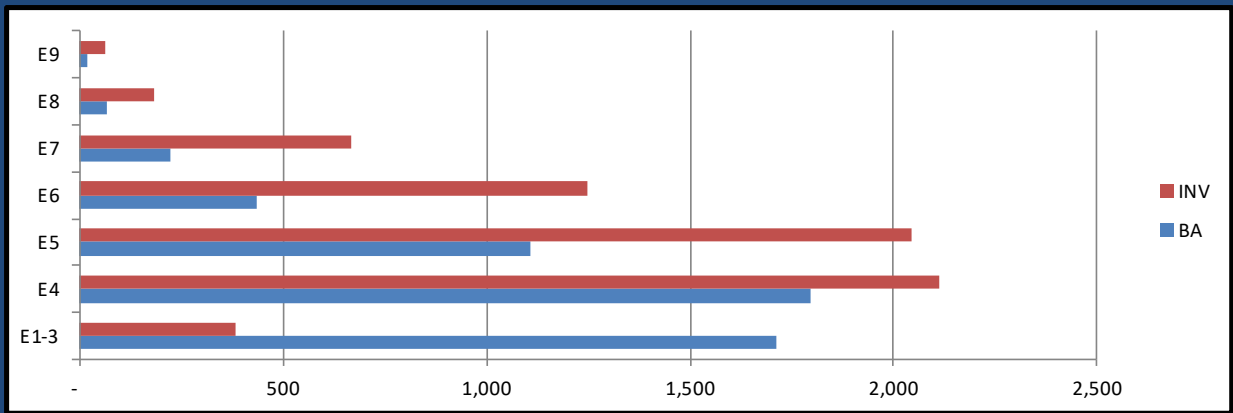
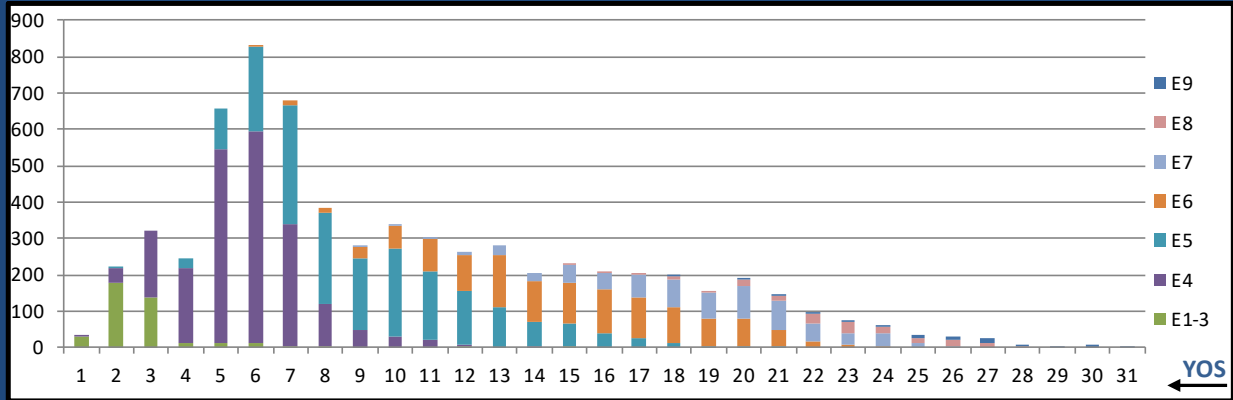
	E1-3	E4	E5	E6	E7	E8	E9	Total
%INV to BA	0%	0%	0%	288%	41%	194%	350%	89%
BA	-	-	3	24	154	17	4	202
Total Inventory	-	-	-	69	63	33	14	179
SJA Inventory	#DIV/0!		256%		63%			

L02A FMF RECON IDC



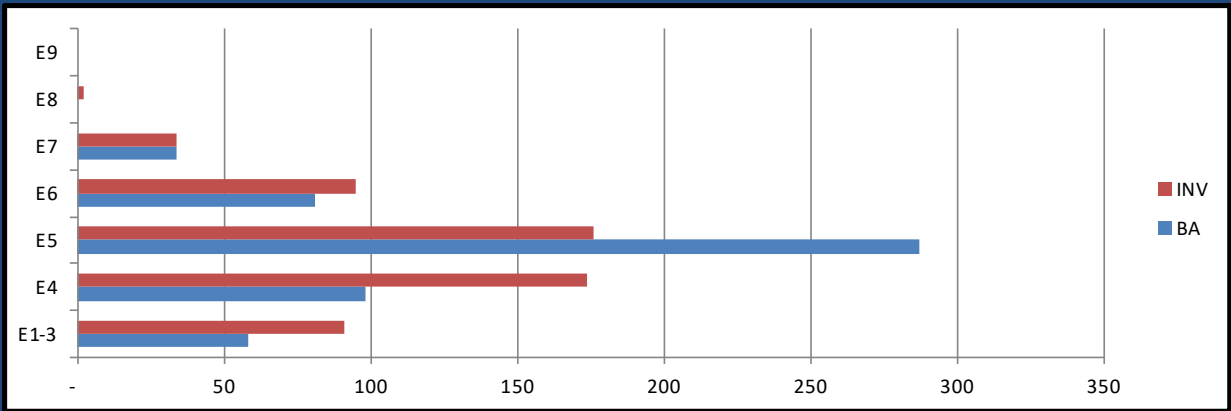
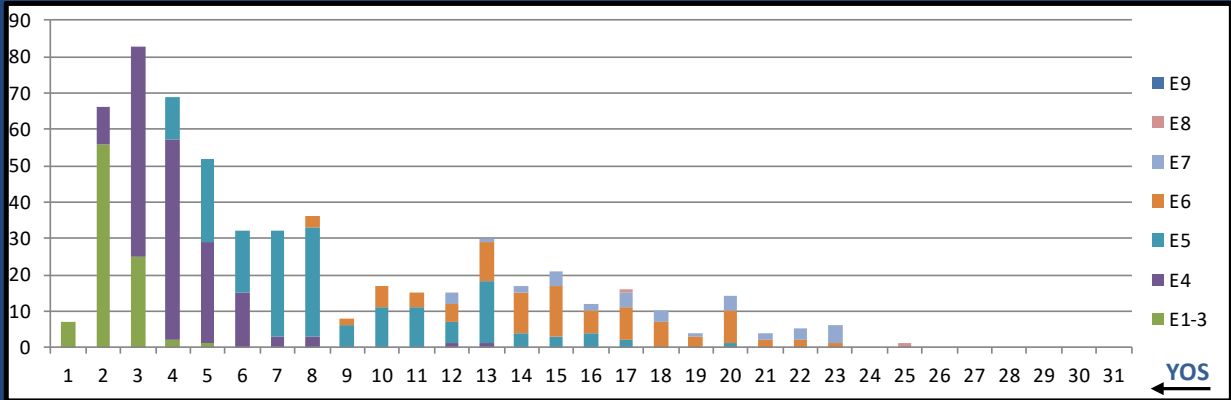
	E1-3	E4	E5	E6	E7	E8	E9	Total
%INV to BA	0%	71%	57%	136%	87%	90%	90%	86%
BA	-	28	95	59	61	20	10	273
Total Inventory	-	20	54	80	53	18	9	234
SJA Inventory	71%		87%		88%			

L03A FLD MED TECH



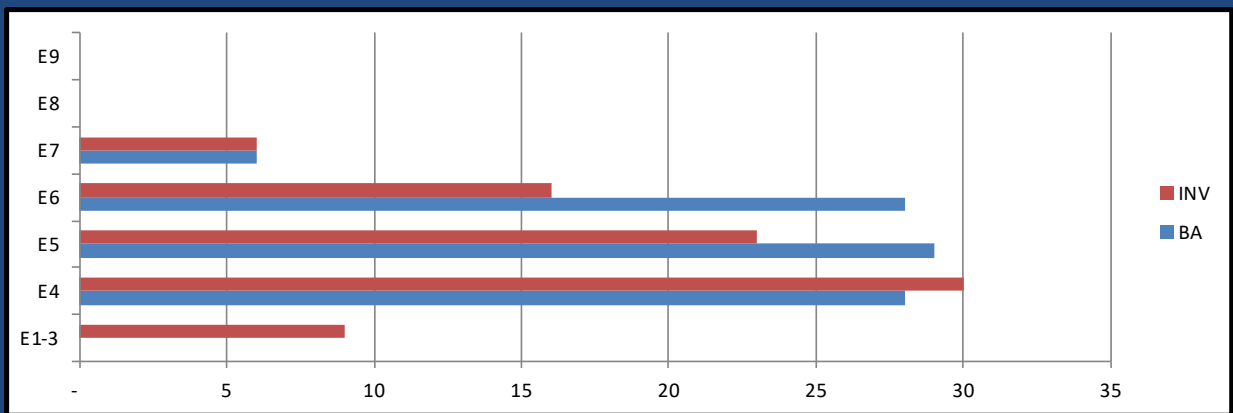
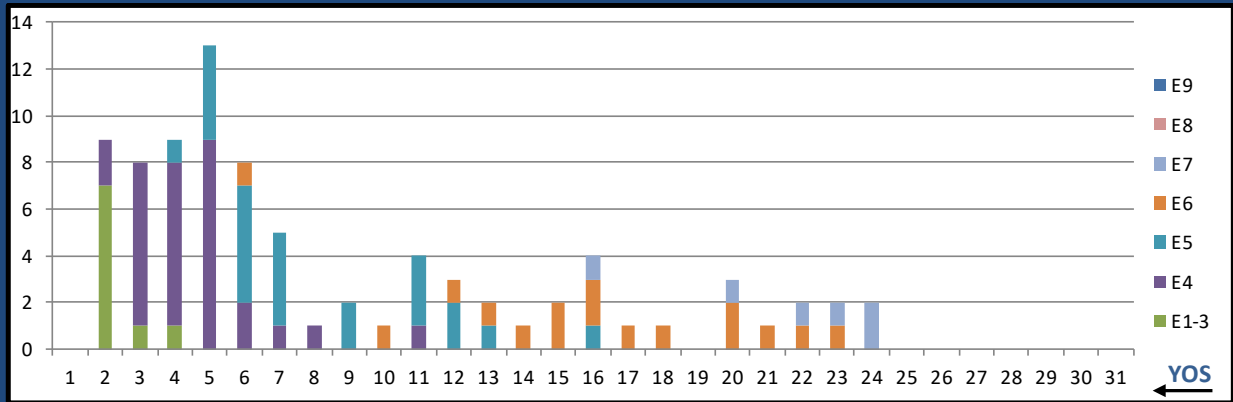
	E1-3	E4	E5	E6	E7	E8	E9	Total
%INV to BA	23%	118%	185%	286%	296%	275%	337%	125%
BA	1,711	1,796	1,106	436	225	67	19	5,360
Total Inventory	385	2,111	2,045	1,248	667	184	64	6,704
SJA Inventory	71%		214%		294%			

L04A AERO MED TECH



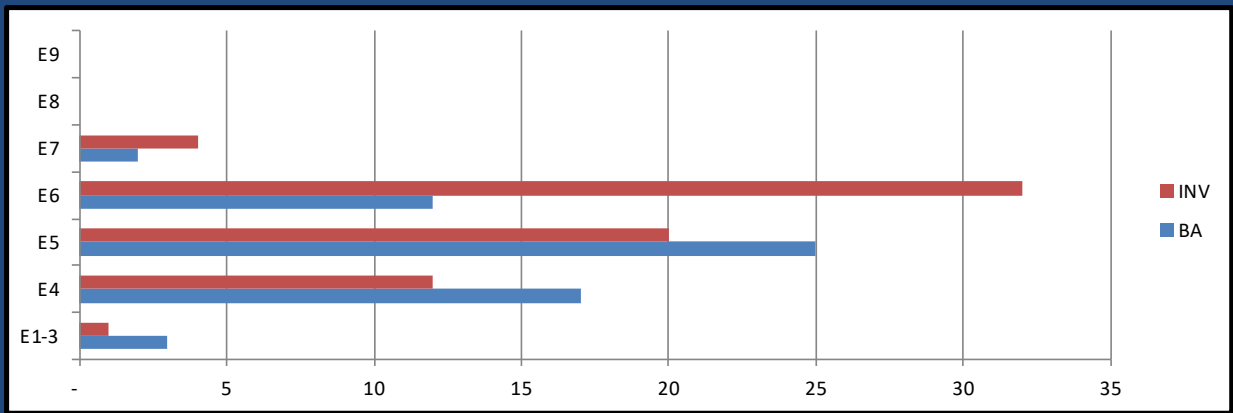
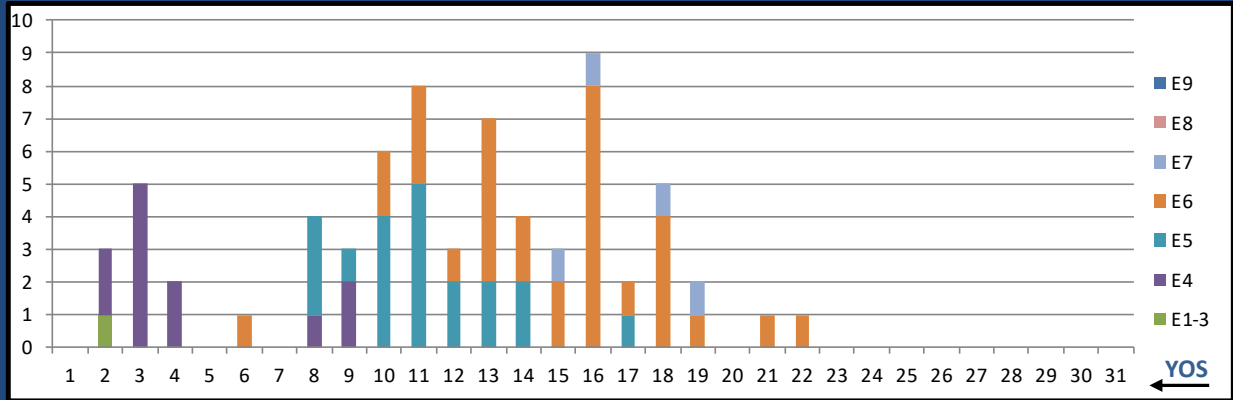
	E1-3	E4	E5	E6	E7	E8	E9	Total
%INV to BA	157%	178%	61%	117%	100%	0%	0%	103%
BA	58	98	287	81	34	-	-	558
Total Inventory	91	174	176	95	34	2	-	572
SJA Inventory	170%		74%		106%			

L05A RAD HLTH TECH



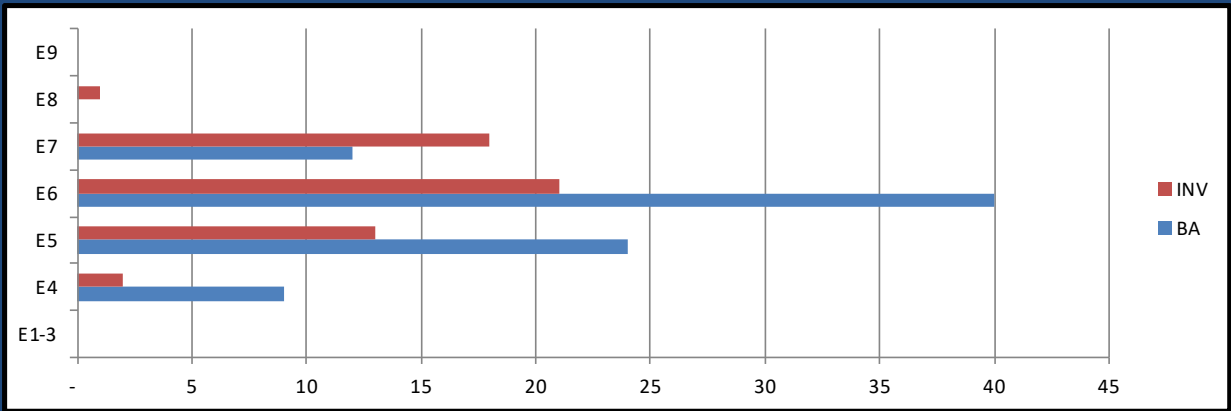
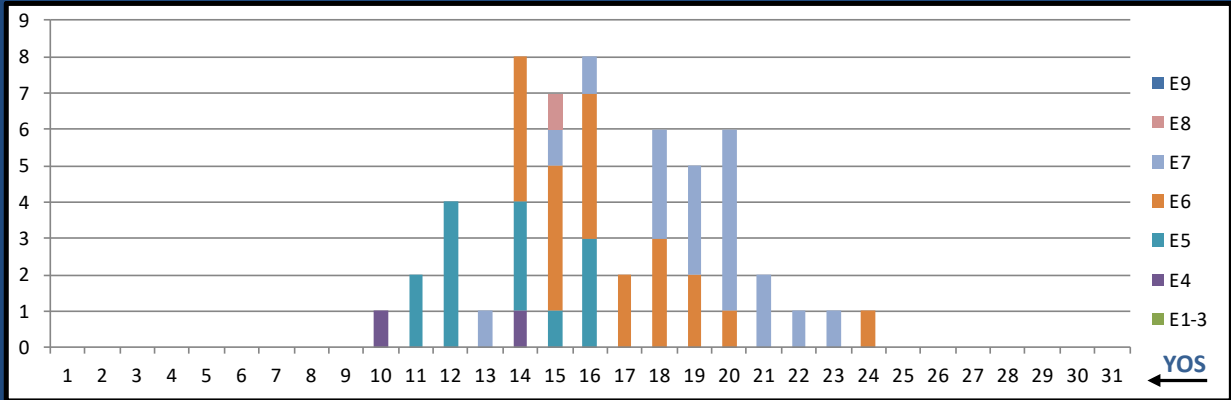
	E1-3	E4	E5	E6	E7	E8	E9	Total
%INV to BA	0%	107%	79%	57%	100%	0%	0%	92%
BA	-	28	29	28	6	-	-	91
Total Inventory	9	30	23	16	6	-	-	84
SJA Inventory	139%		68%		100%			

L06A CV TECH



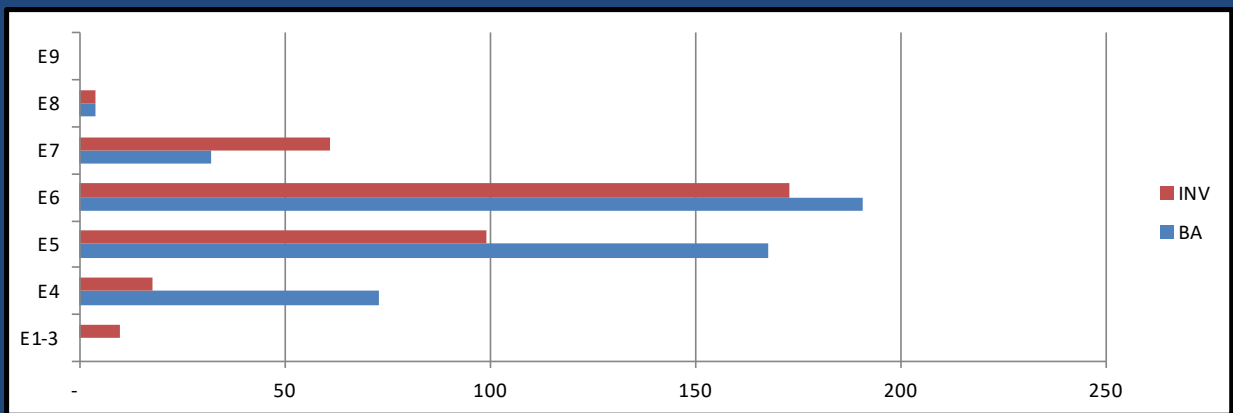
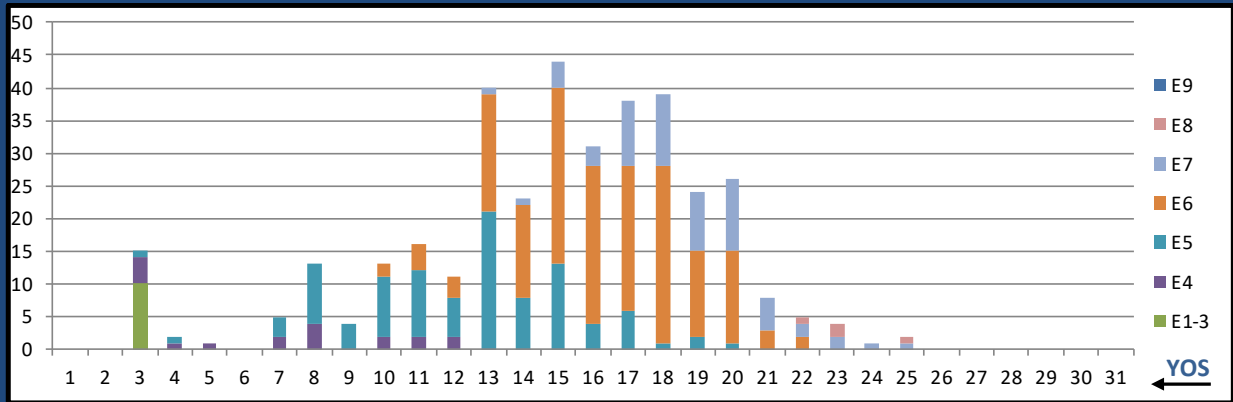
	E1-3	E4	E5	E6	E7	E8	E9	Total
%INV to BA	33%	71%	80%	267%	200%	0%	0%	117%
BA	3	17	25	12	2	-	-	59
Total Inventory	1	12	20	32	4	-	-	69
SJA Inventory	65%		141%		200%			

L07A AERO PHYS TECH



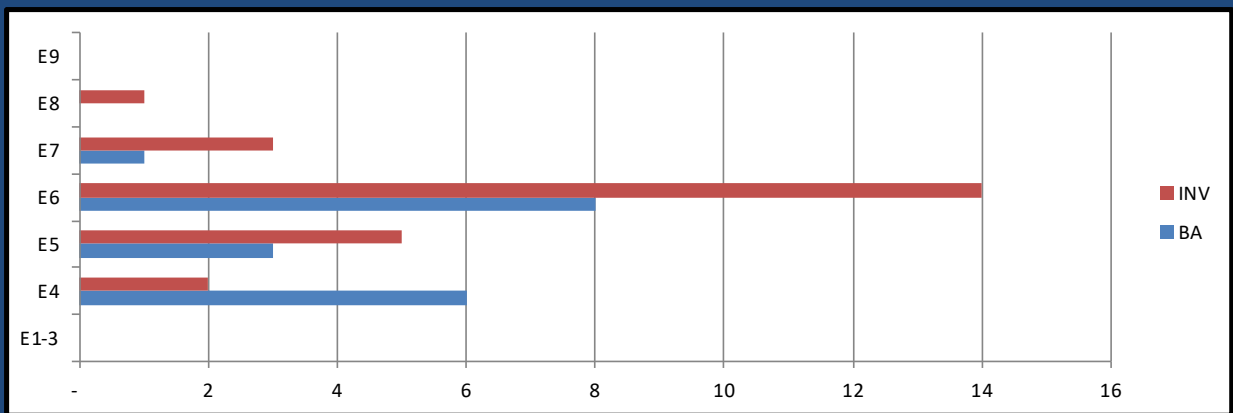
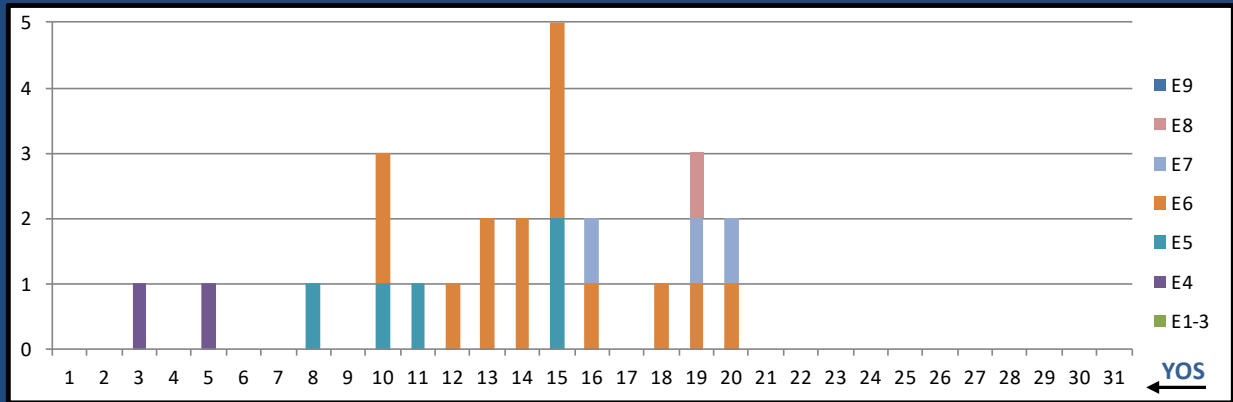
	E1-3	E4	E5	E6	E7	E8	E9	Total
%INV to BA	0%	22%	54%	53%	150%	0%	0%	65%
BA	-	9	24	40	12	-	-	85
Total Inventory	-	2	13	21	18	1	-	55
SJA Inventory	22%		53%		158%			

L08A BIOMED EQ TECH



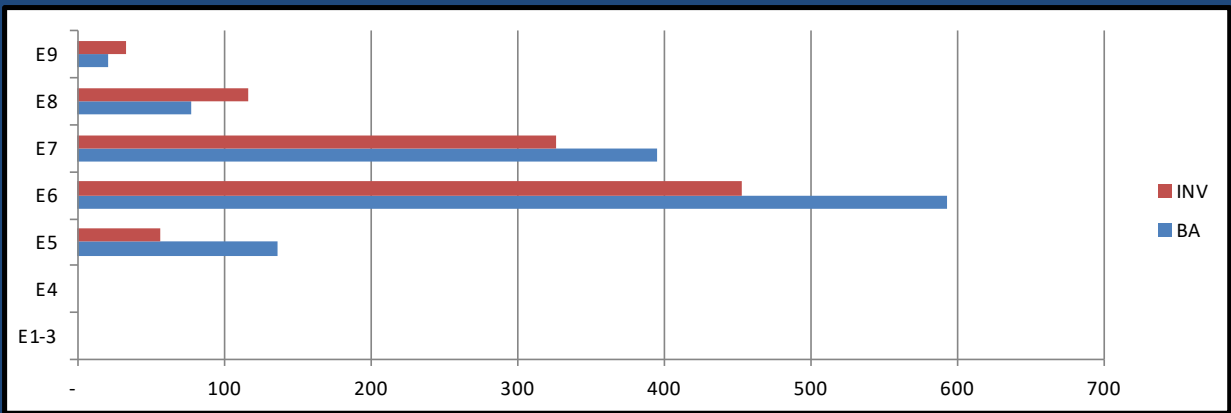
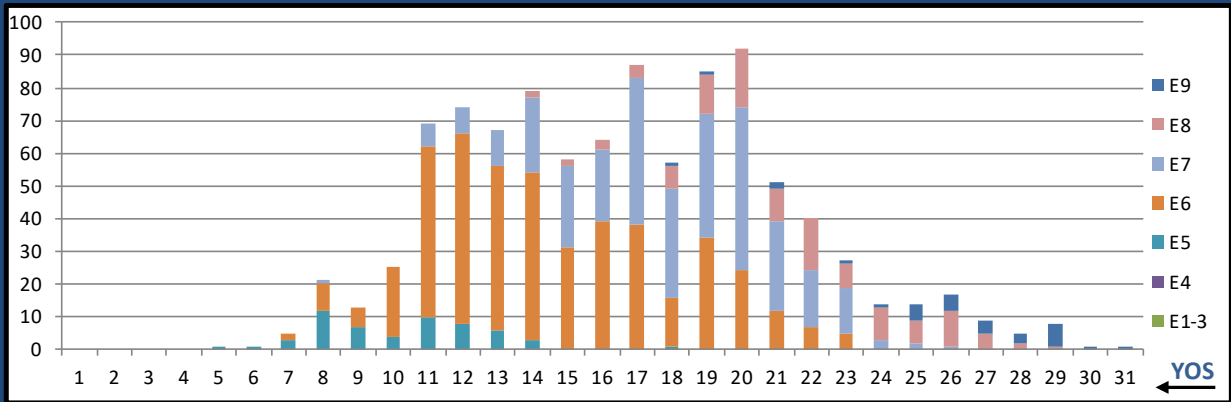
	E1-3	E4	E5	E6	E7	E8	E9	Total
%INV to BA	0%	25%	59%	91%	191%	100%	0%	78%
BA	-	73	168	191	32	4	-	468
Total Inventory	10	18	99	173	61	4	-	365
SJA Inventory	38%		76%		181%			

L09A NUC MED TECH



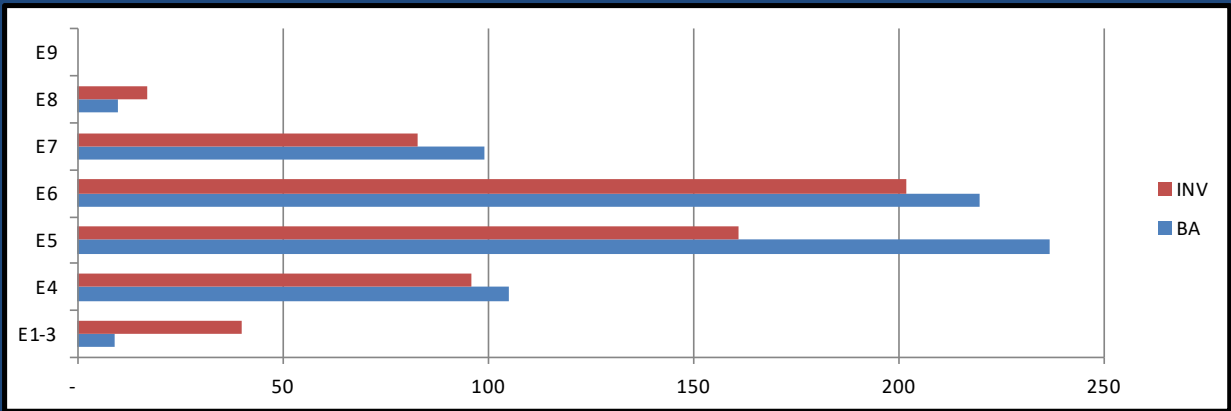
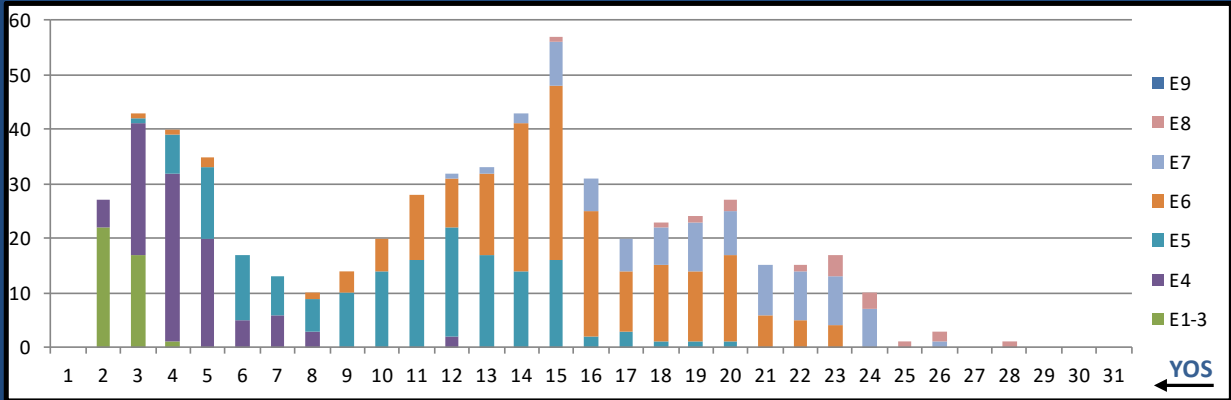
	E1-3	E4	E5	E6	E7	E8	E9	Total
%INV to BA	0%	33%	167%	175%	300%	0%	0%	139%
BA	-	6	3	8	1	-	-	18
Total Inventory	-	2	5	14	3	1	-	25
SJA Inventory	33%		173%		400%			

L10A SURFACE FORCE IDC



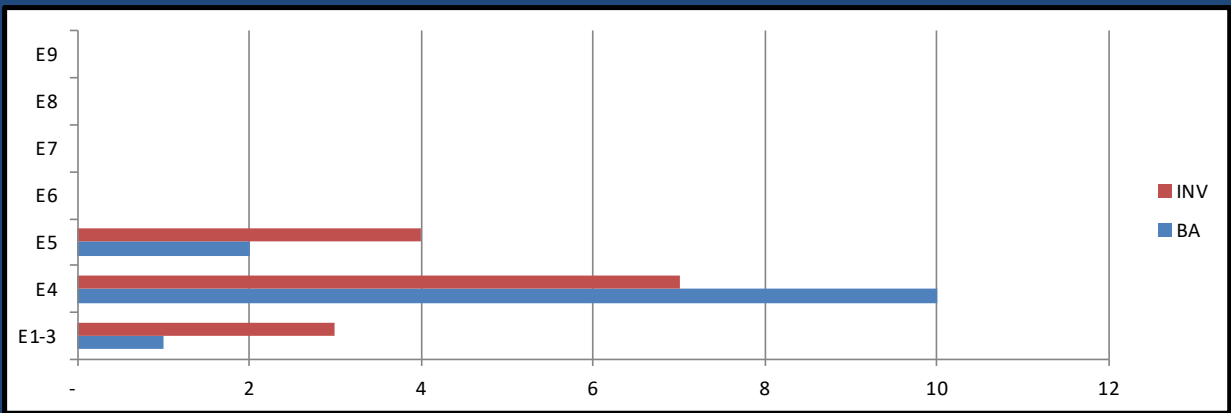
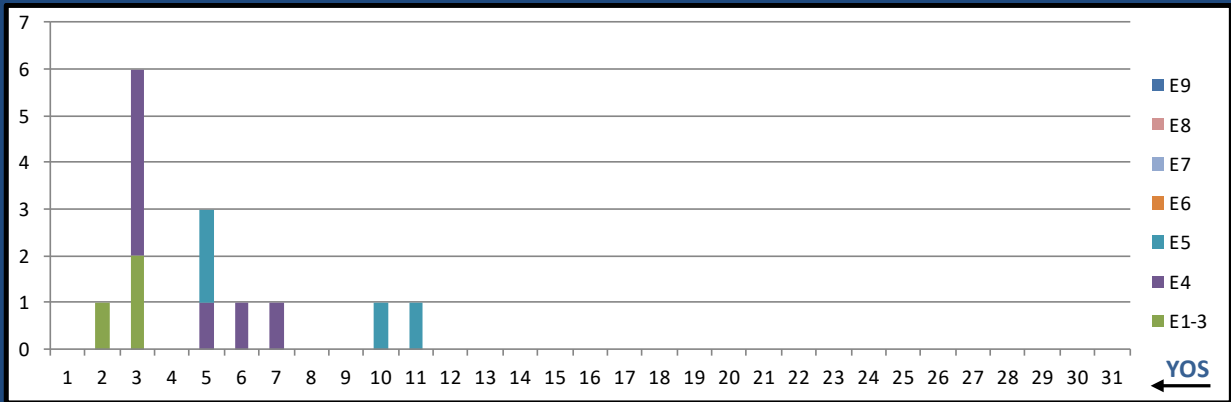
	E1-3	E4	E5	E6	E7	E8	E9	Total
%INV to BA	0%	0%	41%	76%	83%	150%	157%	81%
BA	-	-	136	593	395	78	21	1,223
Total Inventory	-	-	56	453	327	117	33	986
SJA Inventory	#DIV/0!		70%		97%			

L12A PREV MED TECH



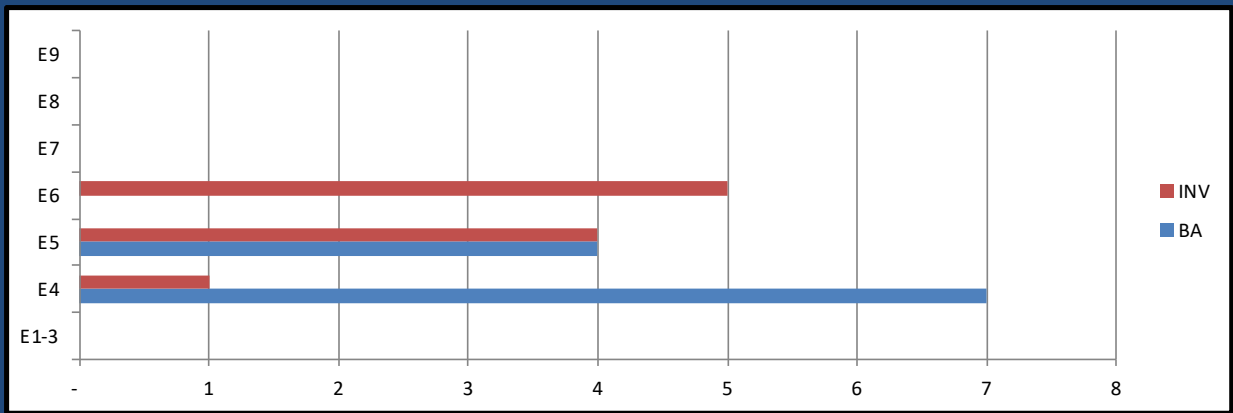
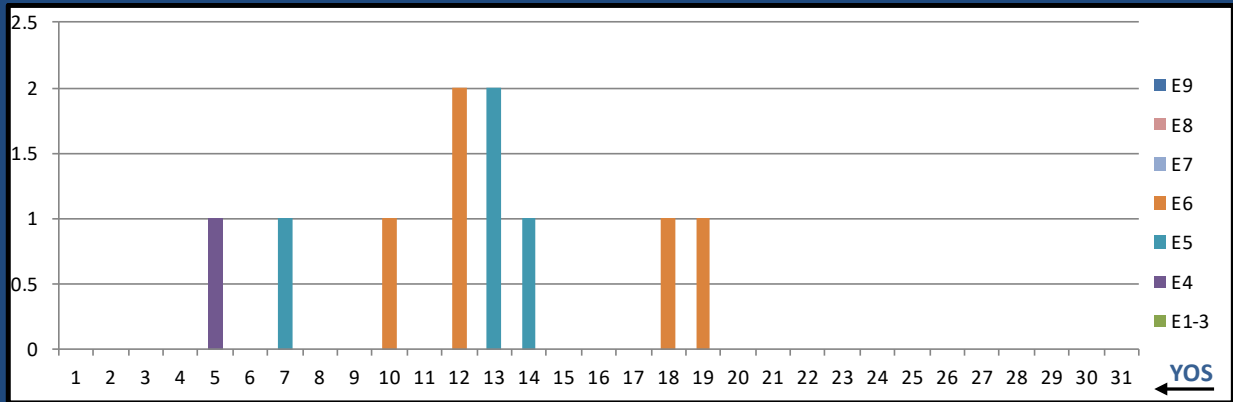
	E1-3	E4	E5	E6	E7	E8	E9	Total
%INV to BA	444%	91%	68%	92%	84%	170%	0%	88%
BA	9	105	237	220	99	10	-	680
Total Inventory	40	96	161	202	83	17	-	599
SJA Inventory	119%		79%		92%			

L13A HEMO TECH



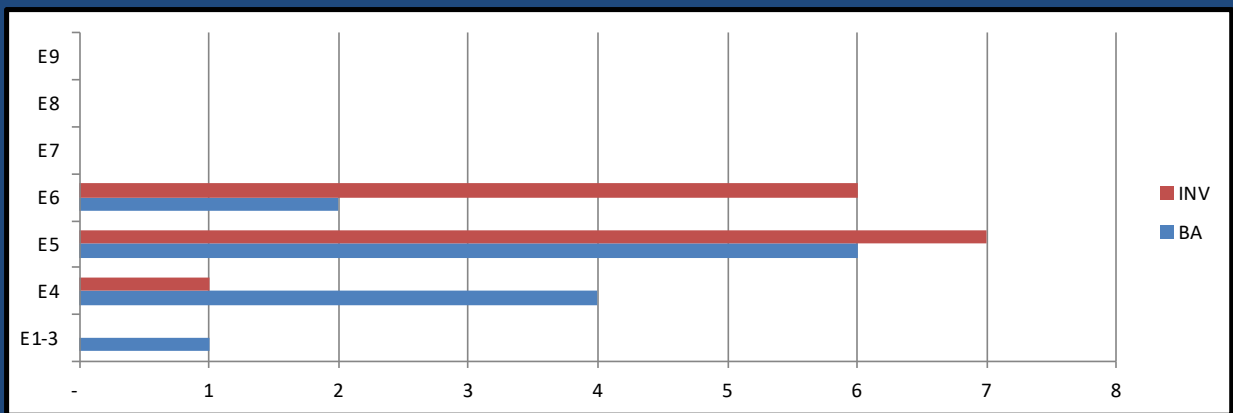
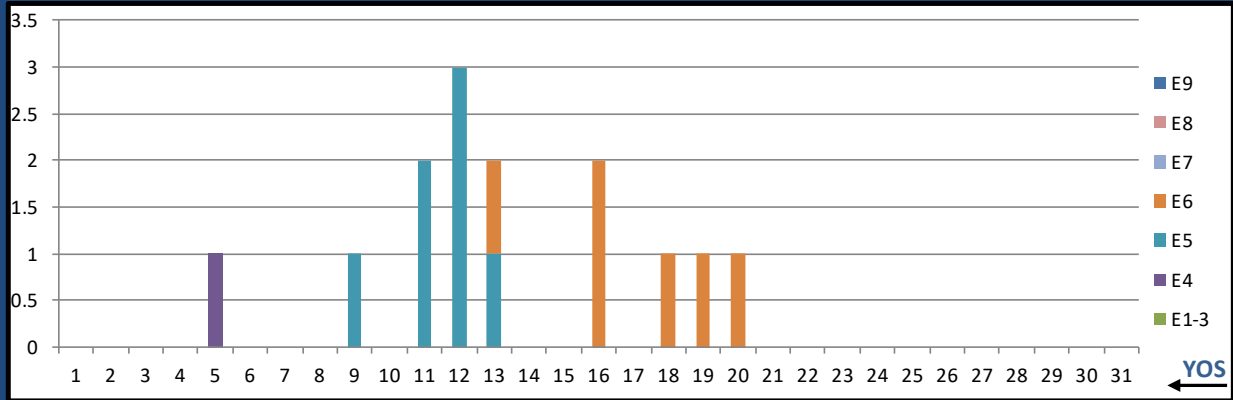
	E1-3	E4	E5	E6	E7	E8	E9	Total
%INV to BA	300%	70%	200%	0%	0%	0%	0%	108%
BA	1	10	2	-	-	-	-	13
Total Inventory	3	7	4	-	-	-	-	14
SJA Inventory	91%		200%			#DIV/0!		

L14A OPTH SURG TECH



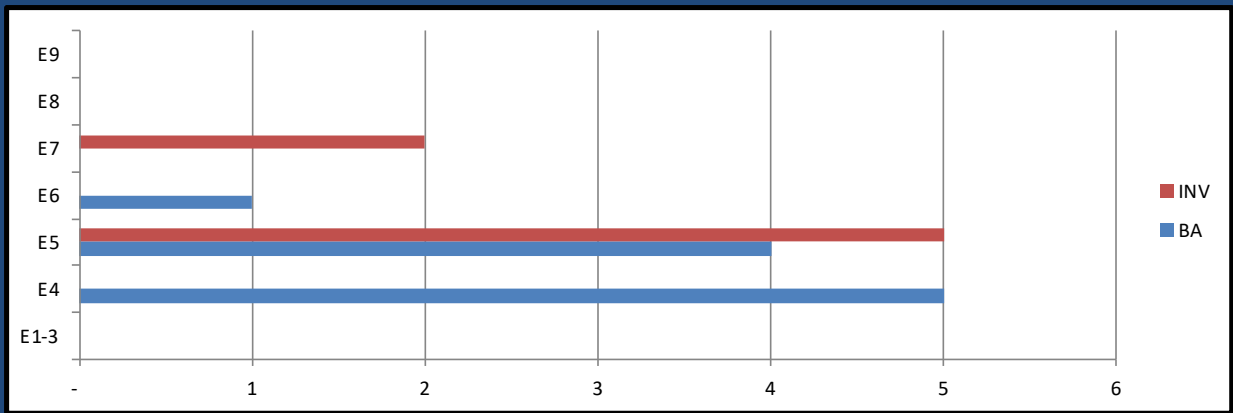
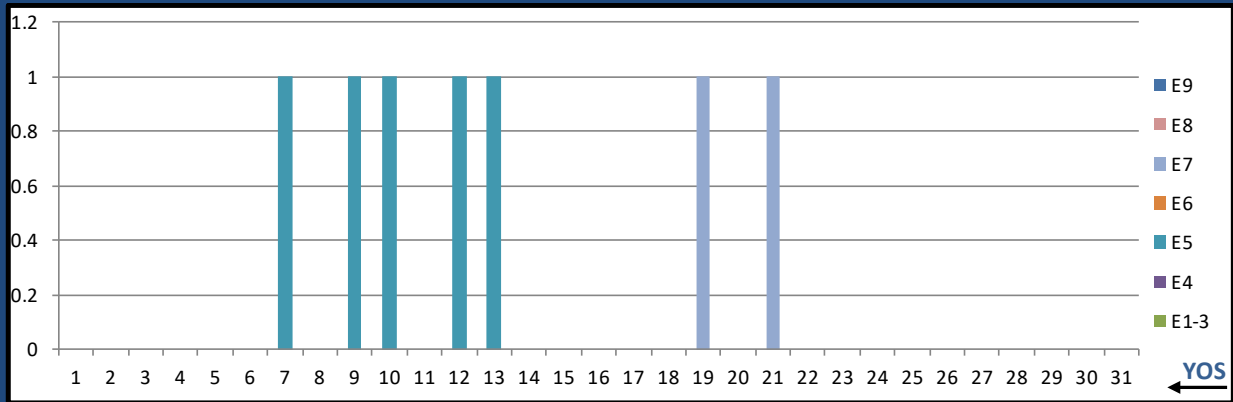
	E1-3	E4	E5	E6	E7	E8	E9	Total
%INV to BA	0%	14%	100%	0%	0%	0%	0%	91%
BA	-	7	4	-	-	-	-	11
Total Inventory	-	1	4	5	-	-	-	10
SJA Inventory	14%		225%		#DIV/0!			

L15A ULTRASOUND TECH



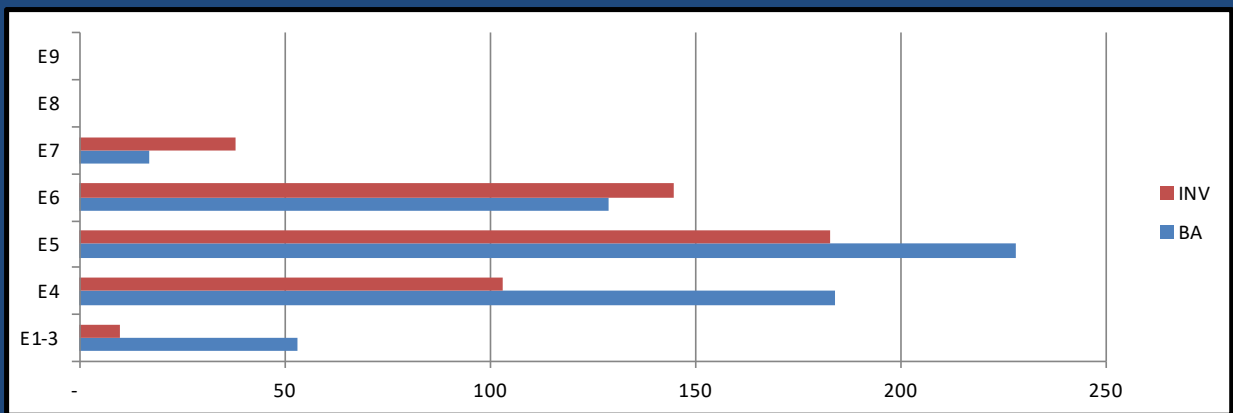
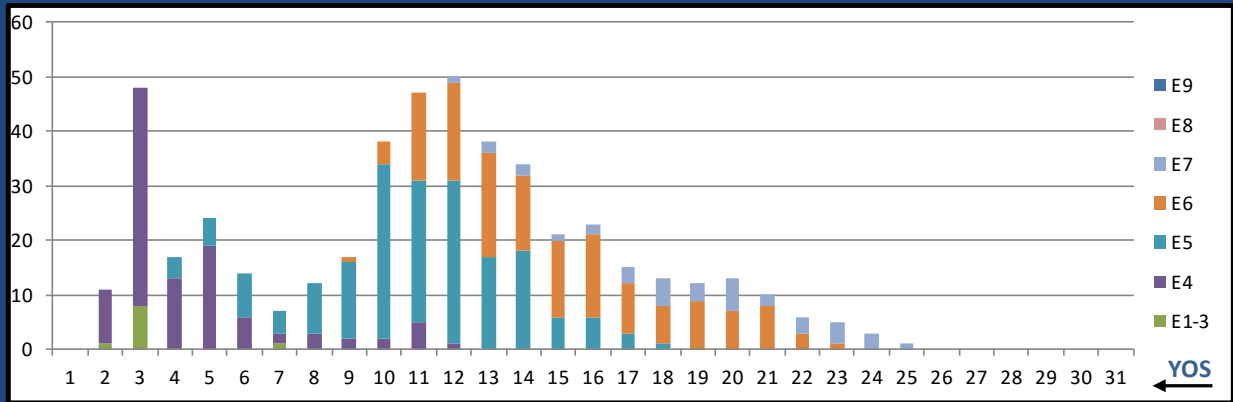
	E1-3	E4	E5	E6	E7	E8	E9	Total
%INV to BA	0%	25%	117%	300%	0%	0%	0%	108%
BA	1	4	6	2	-	-	-	13
Total Inventory	-	1	7	6	-	-	-	14
SJA Inventory	20%		163%		#DIV/0!			

L16A MAMMO TECH



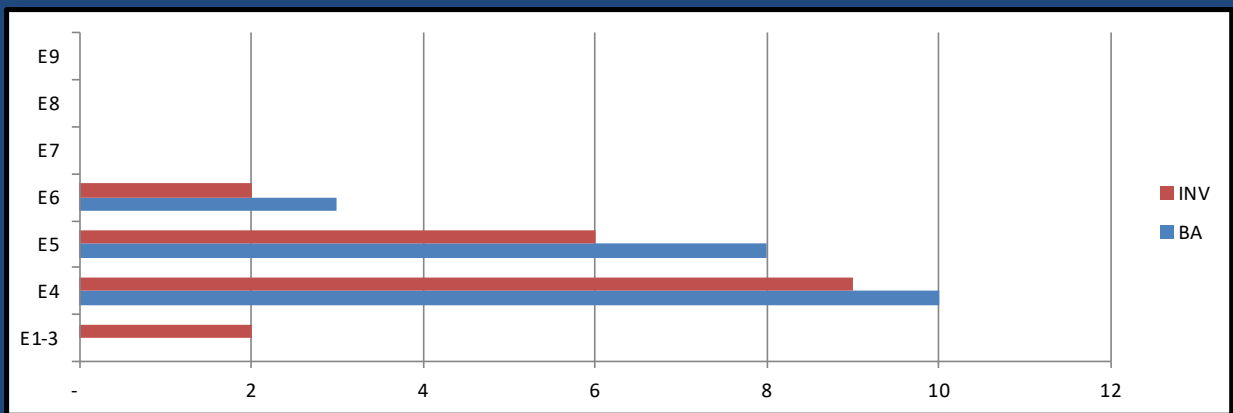
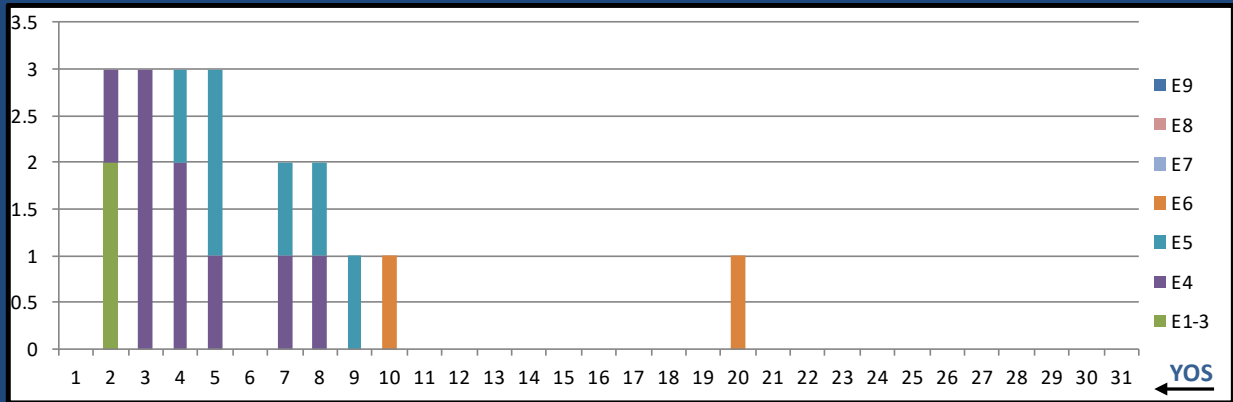
	E1-3	E4	E5	E6	E7	E8	E9	Total
%INV to BA	0%	0%	125%	0%	0%	0%	0%	70%
BA	-	5	4	1	-	-	-	10
Total Inventory	-	-	5	-	2	-	-	7
SJA Inventory	0%		100%		#DIV/0!			

L17A ADV X-RAY TECH



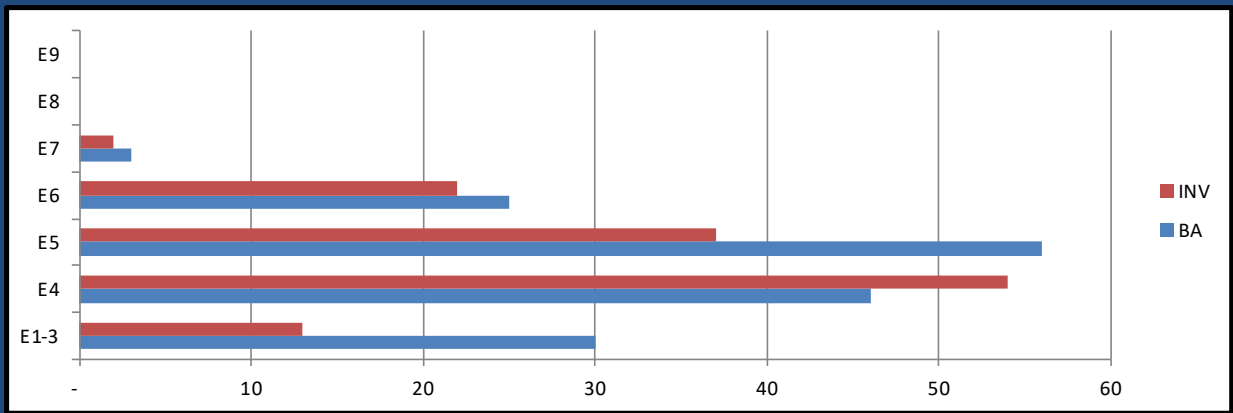
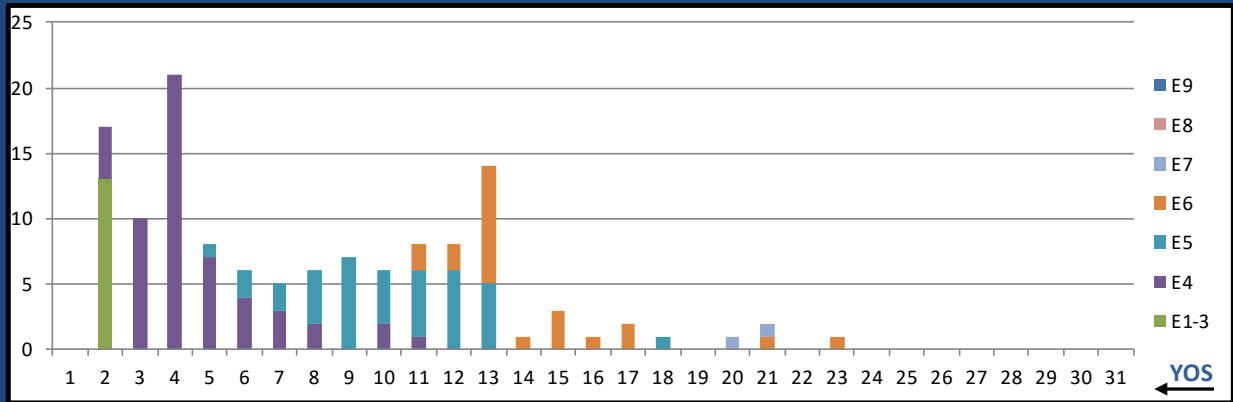
	E1-3	E4	E5	E6	E7	E8	E9	Total
%INV to BA	19%	56%	80%	112%	224%	0%	0%	78%
BA	53	184	228	129	17	-	-	611
Total Inventory	10	103	183	145	38	-	-	479
SJA Inventory	48%		92%		224%			

L18A END TECH



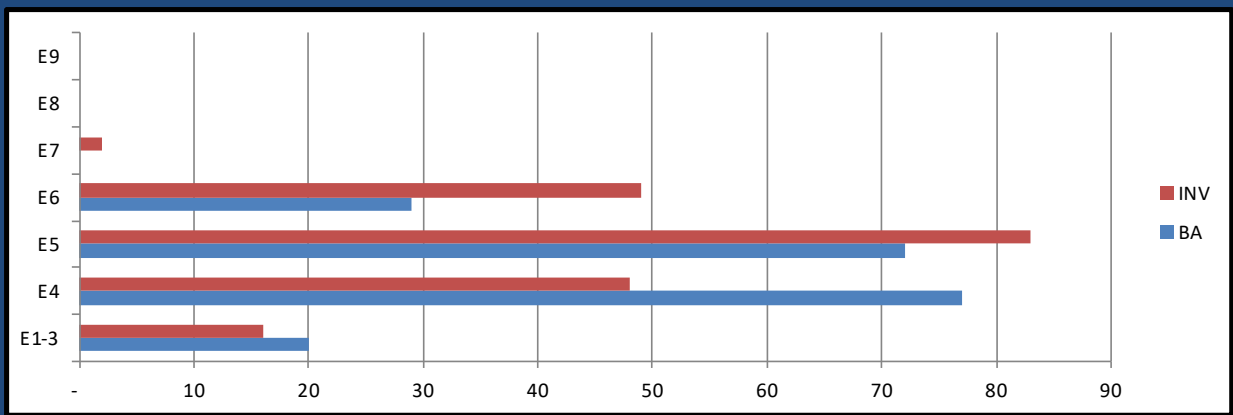
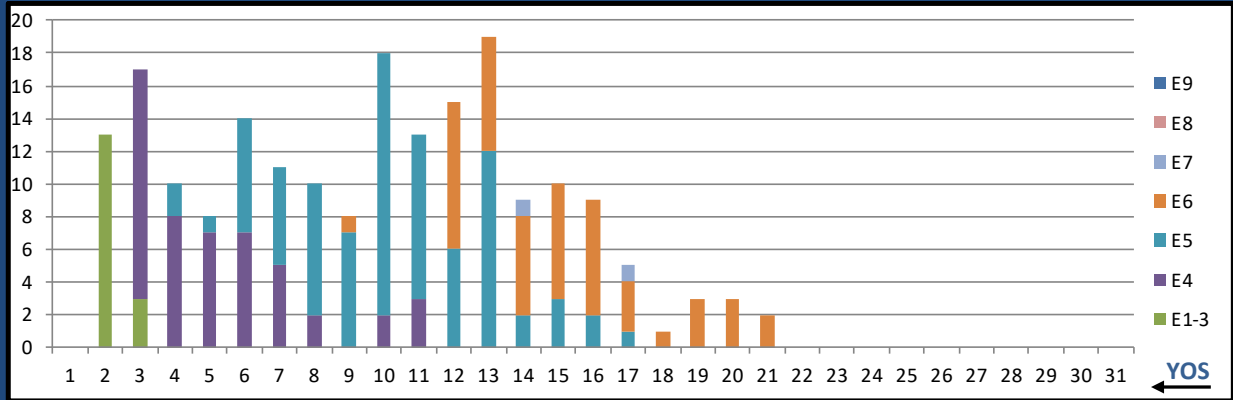
	E1-3	E4	E5	E6	E7	E8	E9	Total
%INV to BA	0%	90%	75%	67%	0%	0%	0%	90%
BA	-	10	8	3	-	-	-	21
Total Inventory	2	9	6	2	-	-	-	19
SJA Inventory	110%		73%			#DIV/0!		

L19A OPTICIAN



	E1-3	E4	E5	E6	E7	E8	E9	Total
%INV to BA	43%	117%	66%	88%	67%	0%	0%	80%
BA	30	46	56	25	3	-	-	160
Total Inventory	13	54	37	22	2	-	-	128
SJA Inventory	88%		73%		67%			

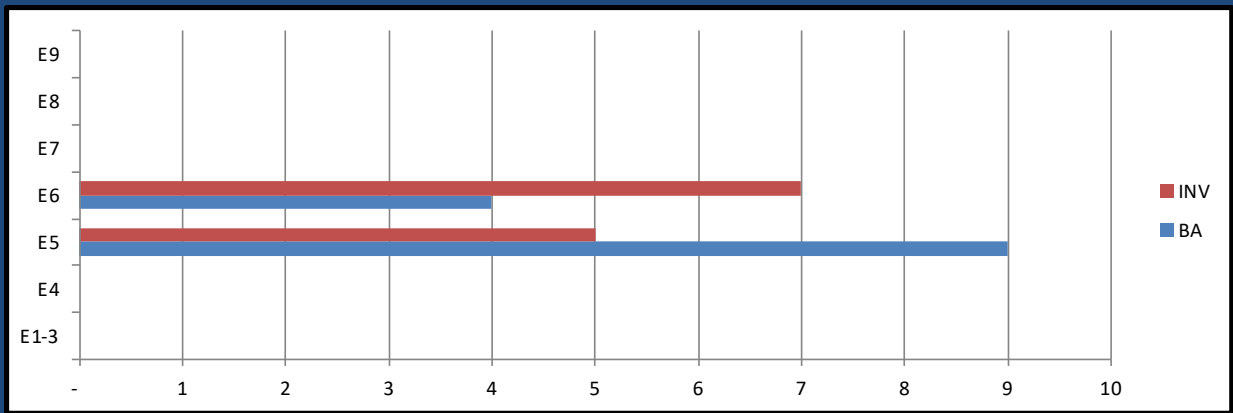
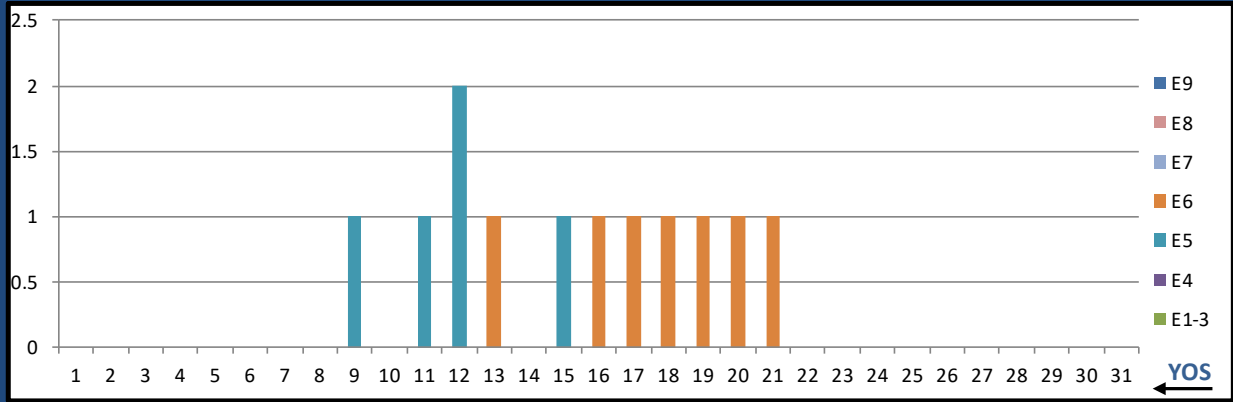
L20A PT TECH



	E1-3	E4	E5	E6	E7	E8	E9	Total
%INV to BA	80%	62%	115%	169%	0%	0%	0%	100%
BA	20	77	72	29	-	-	-	198
Total Inventory	16	48	83	49	2	-	-	198
SJA Inventory	66%		131%		#DIV/0!			

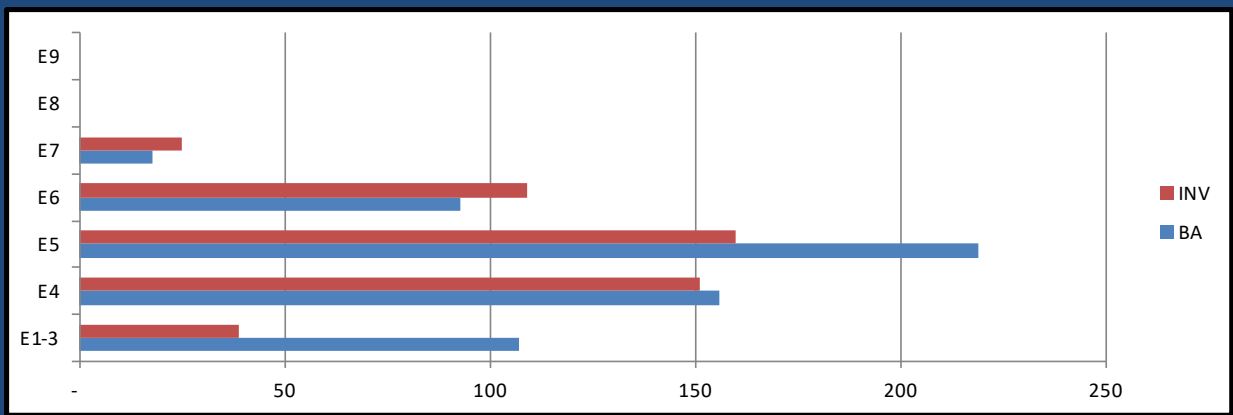
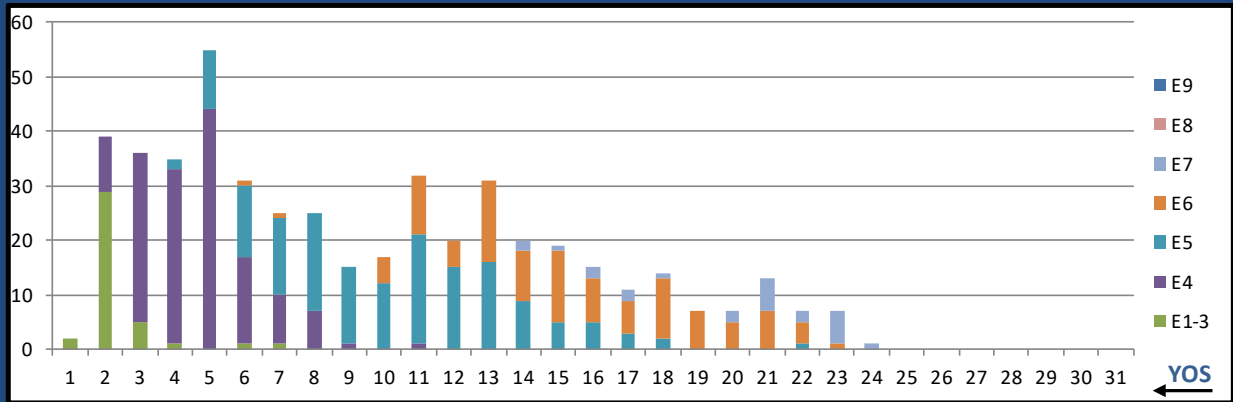
MAY 2024 HM MANNING SNAPSHOT

L21A OT TECH



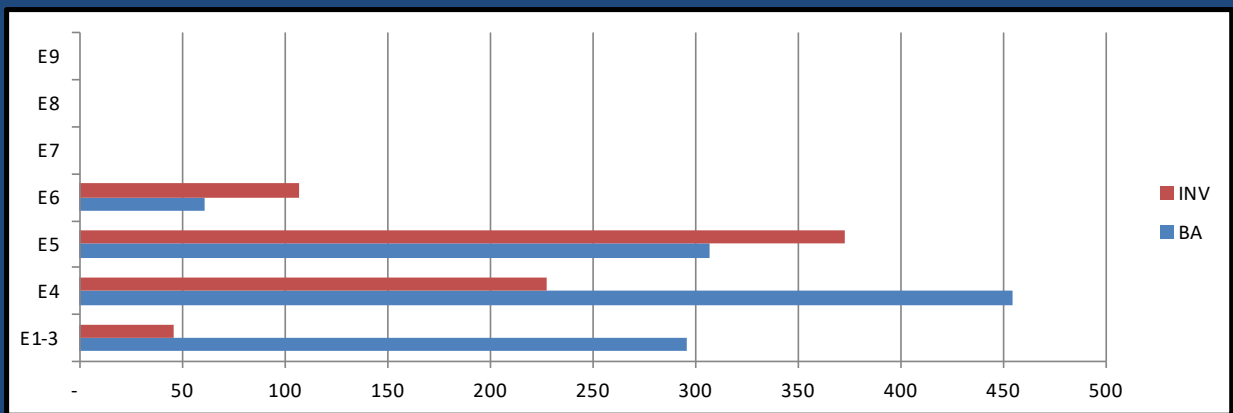
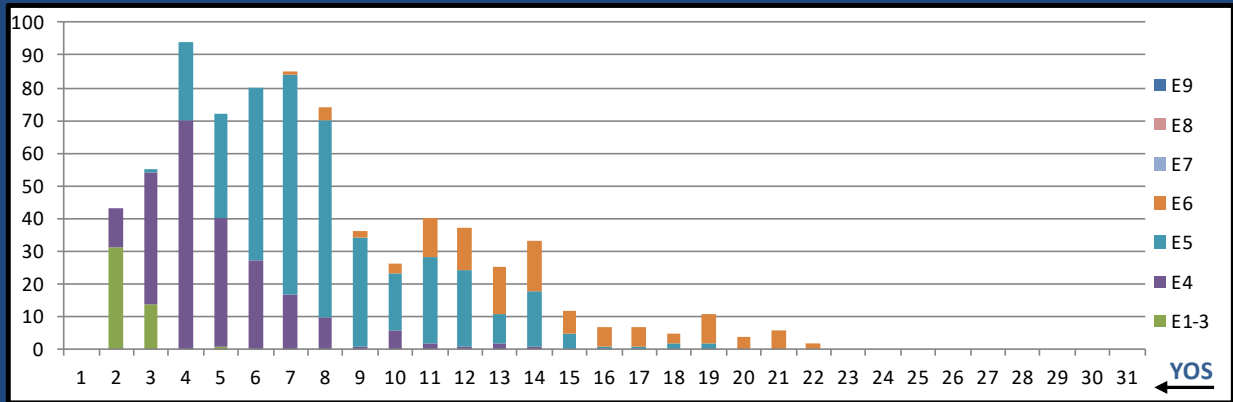
	E1-3	E4	E5	E6	E7	E8	E9	Total
%INV to BA	0%	0%	56%	175%	0%	0%	0%	92%
BA	-	-	9	4	-	-	-	13
Total Inventory	-	-	5	7	-	-	-	12
SJA Inventory	#DIV/0!		92%		#DIV/0!			

L22A PHARM TECH



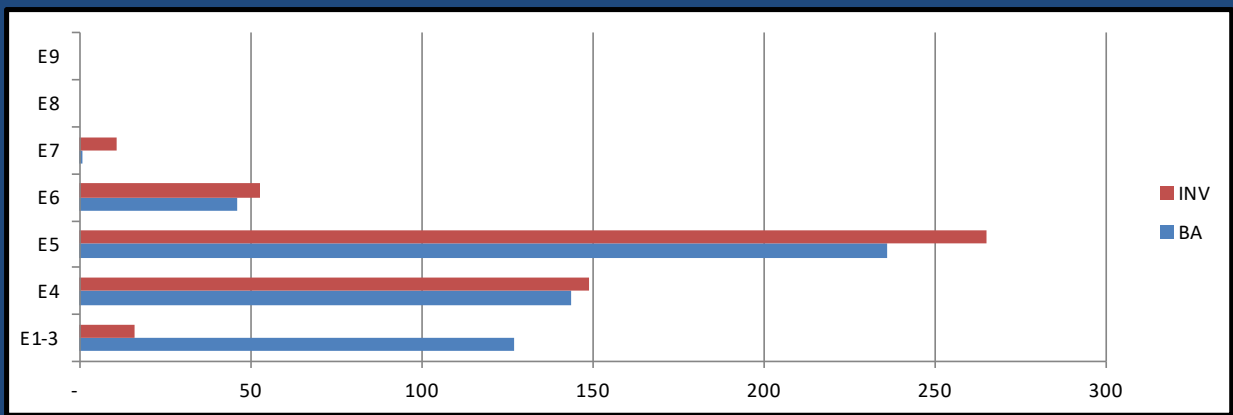
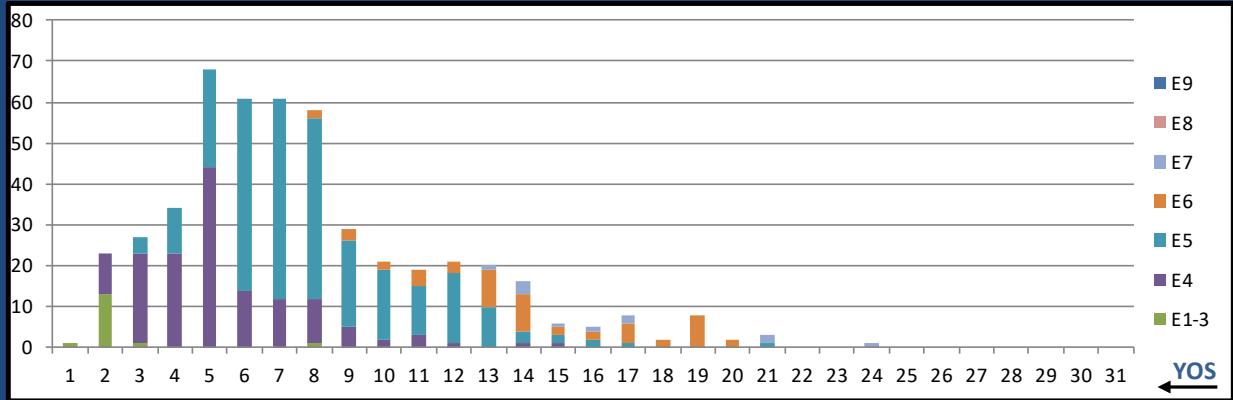
	E1-3	E4	E5	E6	E7	E8	E9	Total
%INV to BA	36%	97%	73%	117%	139%	0%	0%	82%
BA	107	156	219	93	18	-	-	593
Total Inventory	39	151	160	109	25	-	-	484
SJA Inventory	72%		86%		139%			

L23A SURG TECH



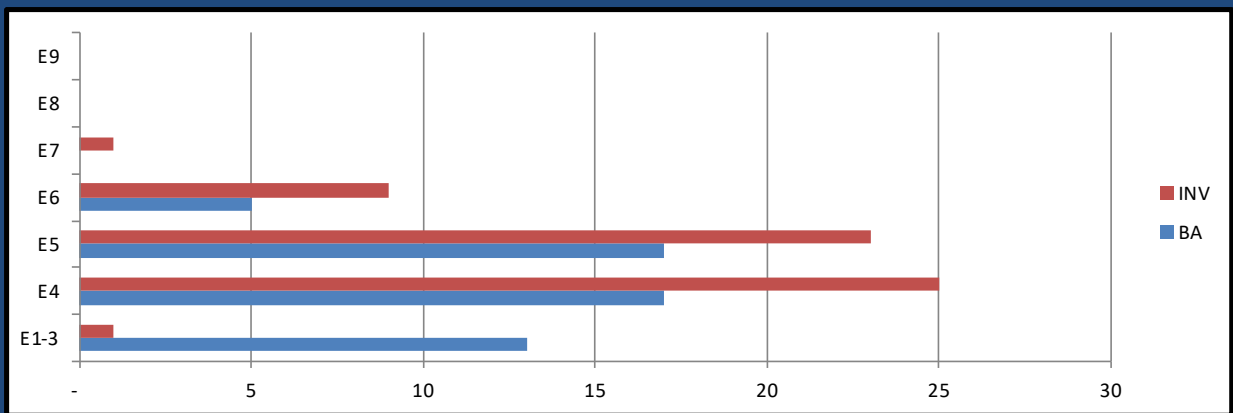
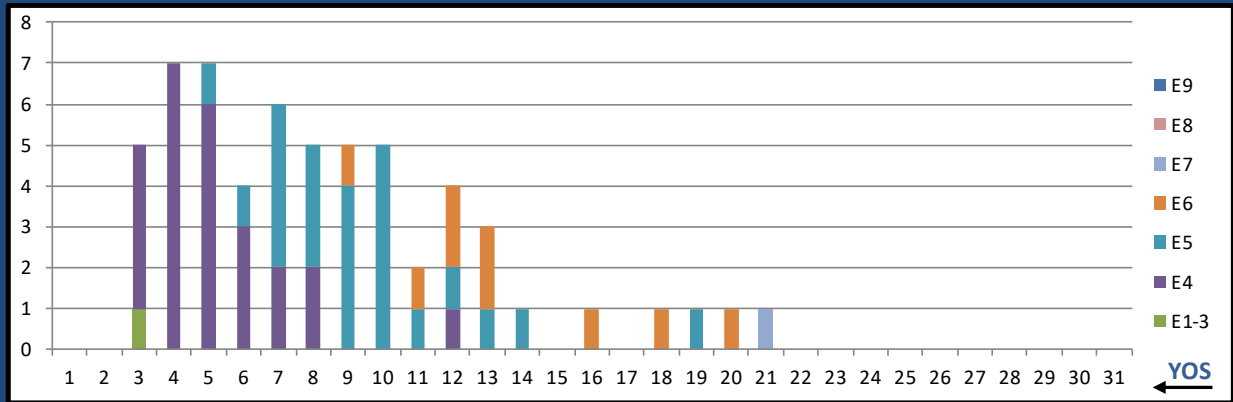
	E1-3	E4	E5	E6	E7	E8	E9	Total
%INV to BA	16%	50%	121%	175%	0%	0%	0%	67%
BA	296	455	307	61	-	-	-	1,119
Total Inventory	46	228	373	107	-	-	-	754
SJA Inventory	36%		130%		#DIV/0!			

L24A BEHAV HLTH



	E1-3	E4	E5	E6	E7	E8	E9	Total
%INV to BA	13%	103%	112%	115%	1100%	0%	0%	89%
BA	127	144	236	46	1	-	-	554
Total Inventory	16	149	265	53	11	-	-	494
SJA Inventory	61%		113%			1100%		

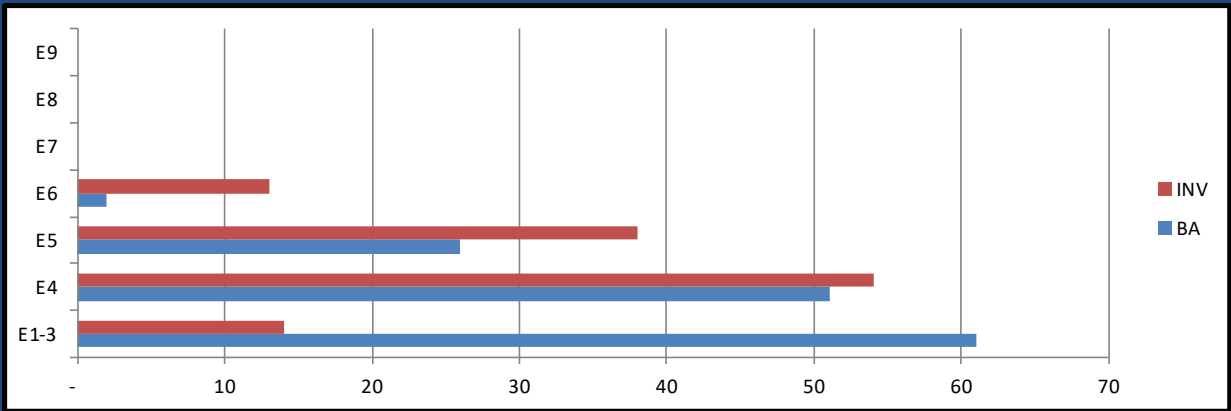
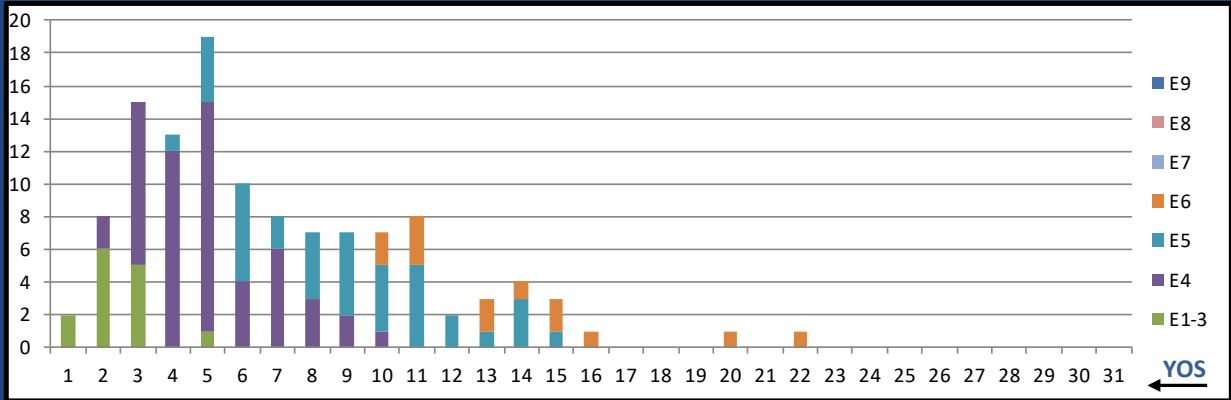
L25A UROLOGY TECH



	E1-3	E4	E5	E6	E7	E8	E9	Total
%INV to BA	8%	147%	135%	180%	0%	0%	0%	113%
BA	13	17	17	5	-	-	-	52
Total Inventory	1	25	23	9	1	-	-	59
SJA Inventory	87%		145%		#DIV/0!			

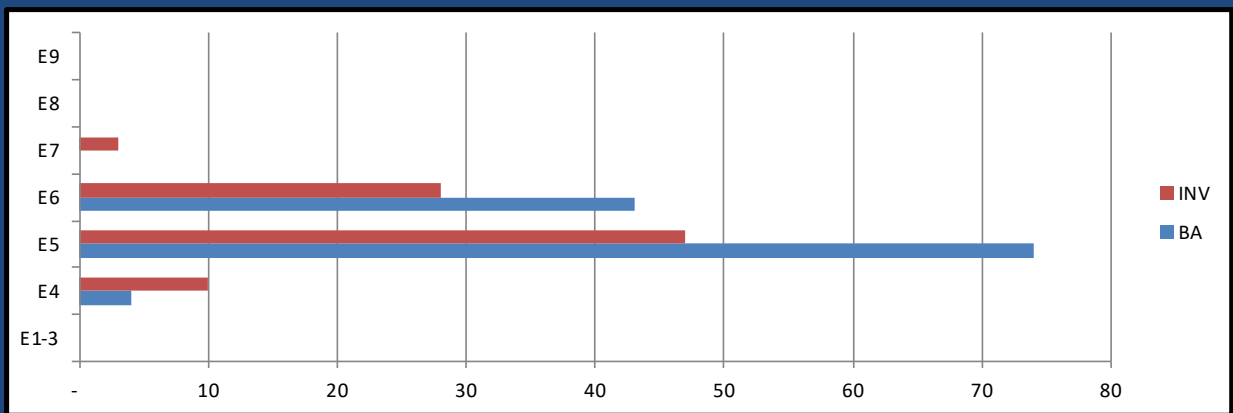
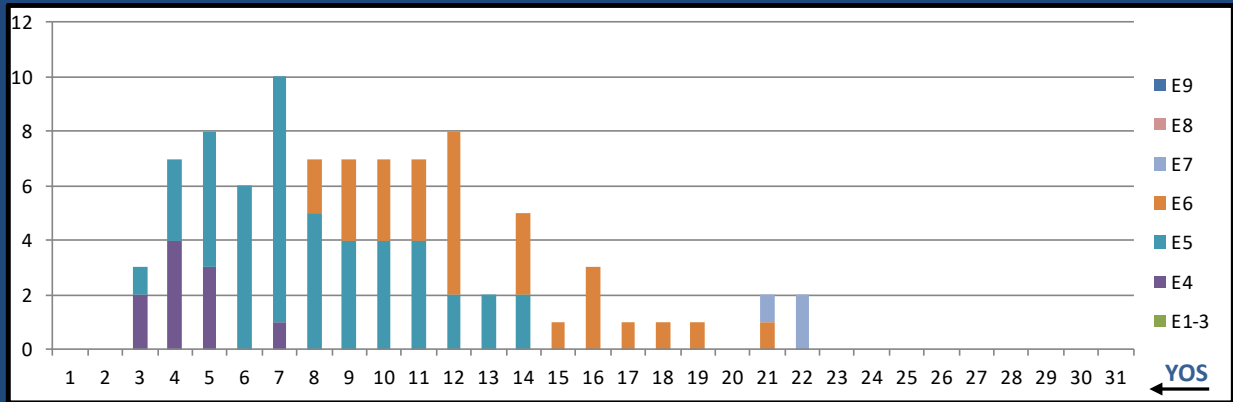
MAY 2024 HM MANNING SNAPSHOT

L26A ORTHOPEDIC TECH



	E1-3	E4	E5	E6	E7	E8	E9	Total
%INV to BA	23%	106%	146%	650%	0%	0%	0%	85%
BA	61	51	26	2	-	-	-	140
Total Inventory	14	54	38	13	-	-	-	119
SJA Inventory	61%		182%			#DIV/0!		

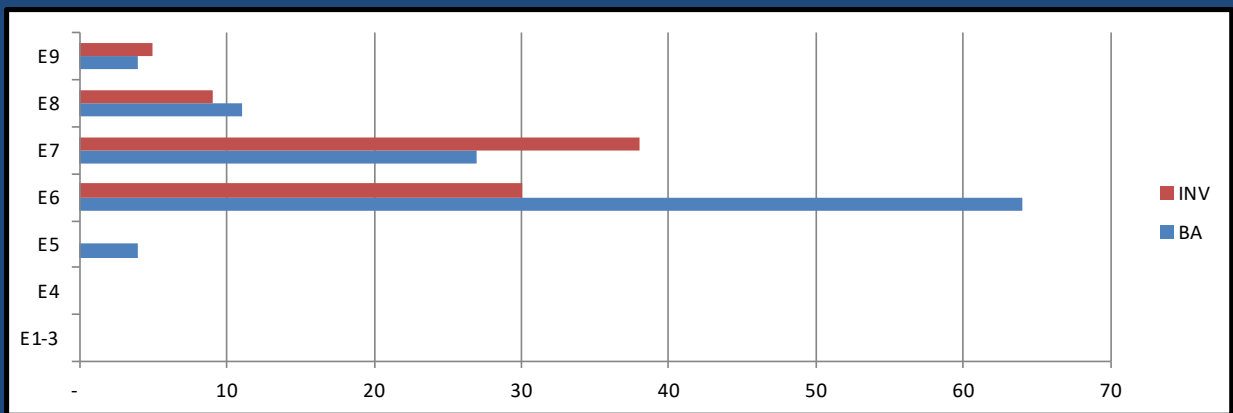
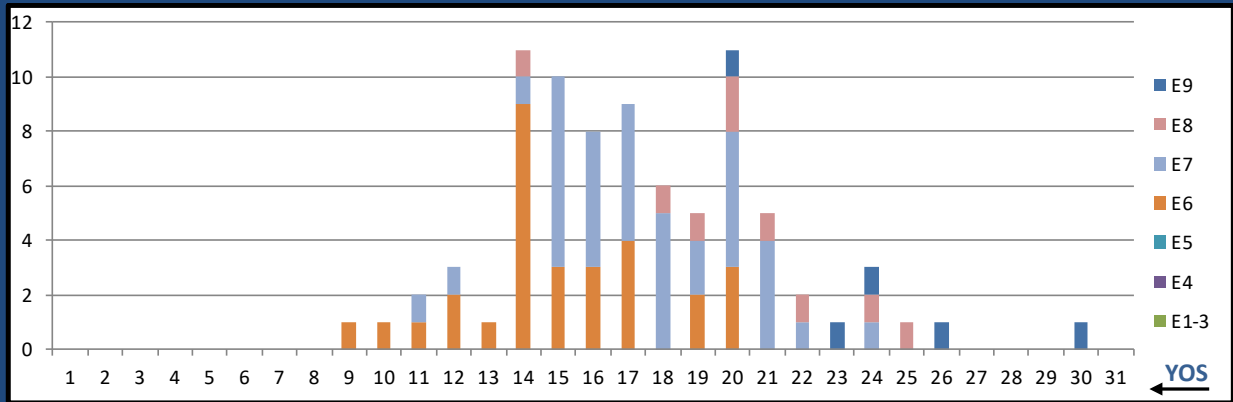
L27A DIVE MED TECH



	E1-3	E4	E5	E6	E7	E8	E9	Total
%INV to BA	0%	250%	64%	65%	0%	0%	0%	73%
BA	-	4	74	43	-	-	-	121
Total Inventory	-	10	47	28	3	-	-	88
SJA Inventory	250%		64%		#DIV/0!			

MAY 2024 HM MANNING SNAPSHOT

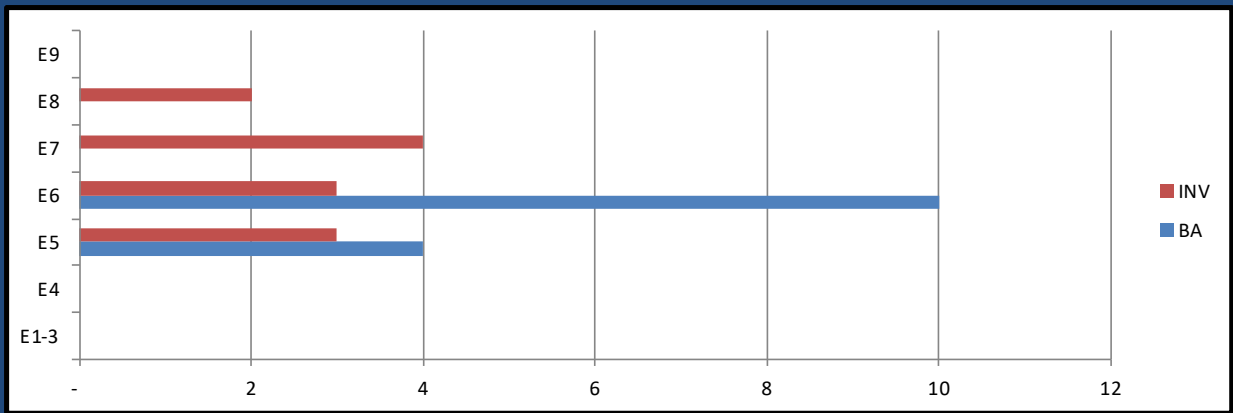
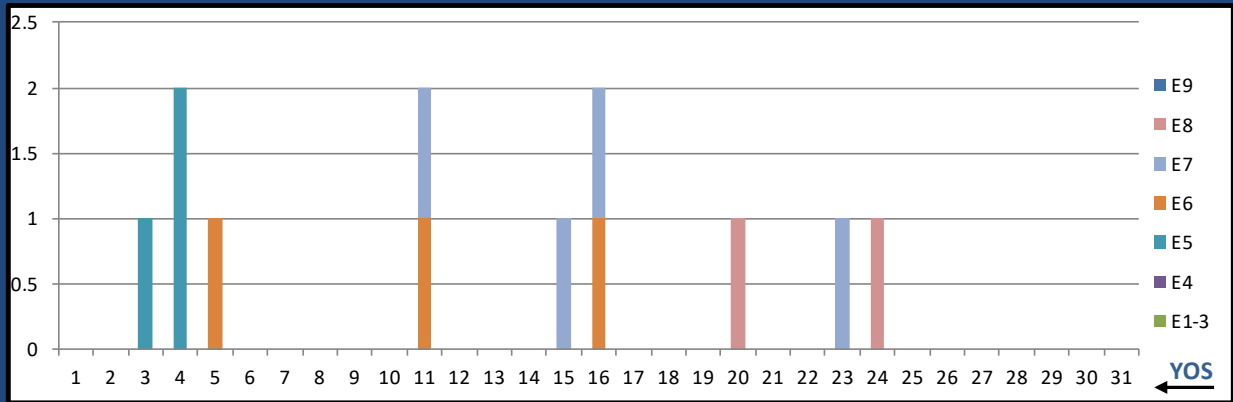
L28A DIVE IDC



	E1-3	E4	E5	E6	E7	E8	E9	Total
%INV to BA	0%	0%	0%	47%	141%	82%	125%	75%
BA	-	-	4	64	27	11	4	110
Total Inventory	-	-	-	30	38	9	5	82
SJA Inventory	#DIV/0!		44%		124%			

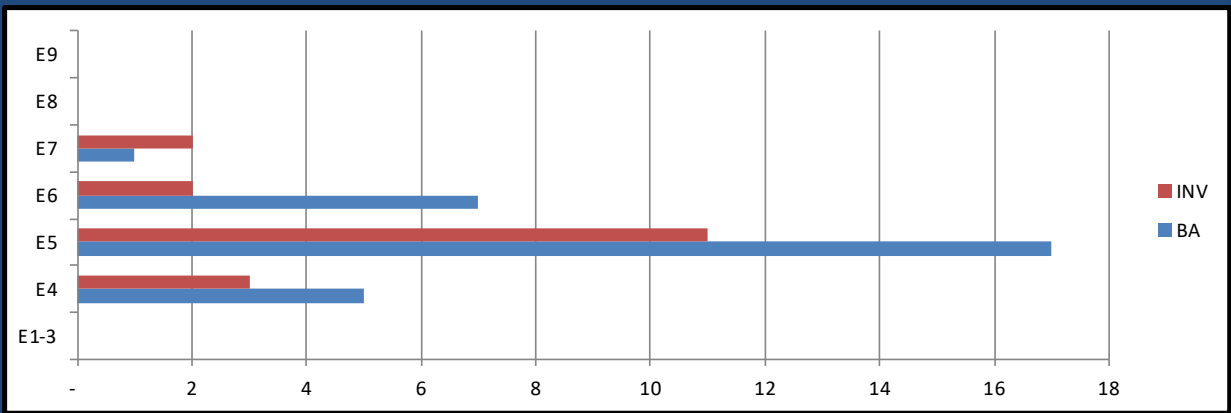
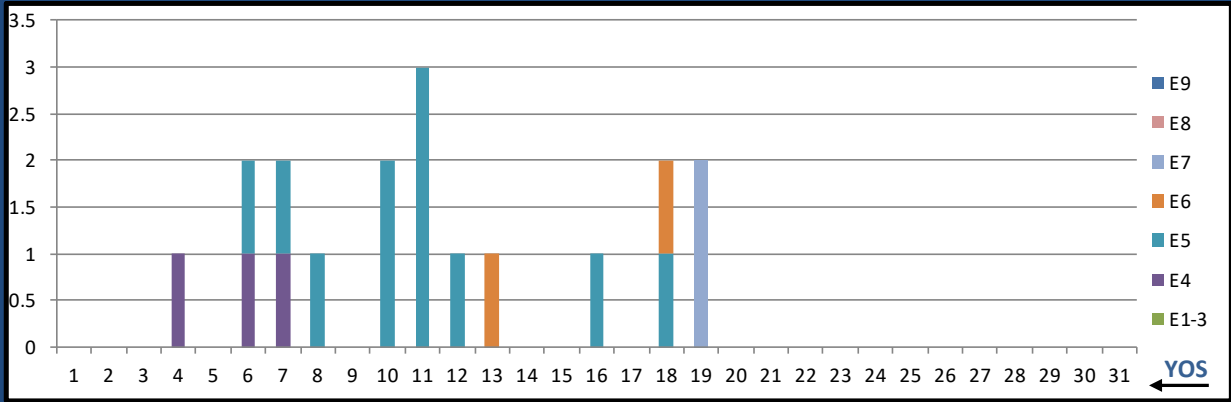
MAY 2024 HM MANNING SNAPSHOT

L29A MORTICIAN



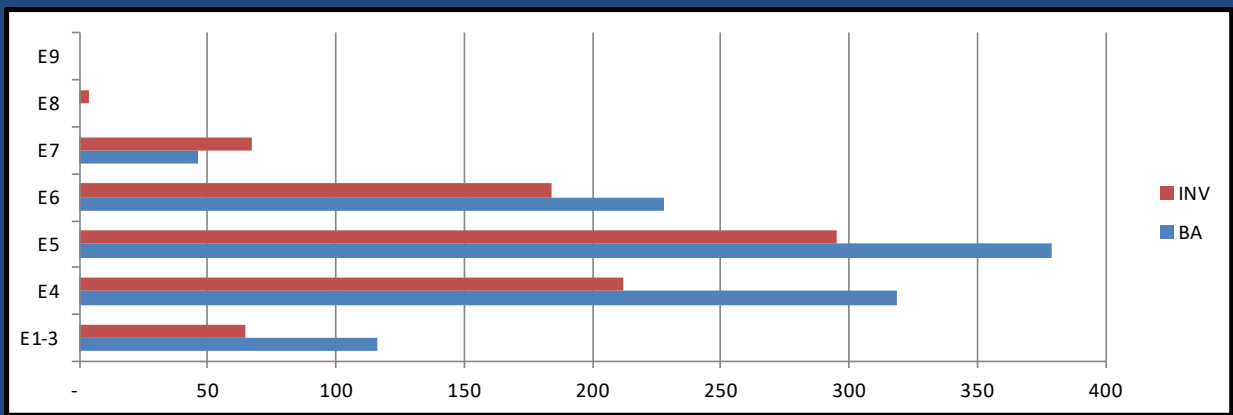
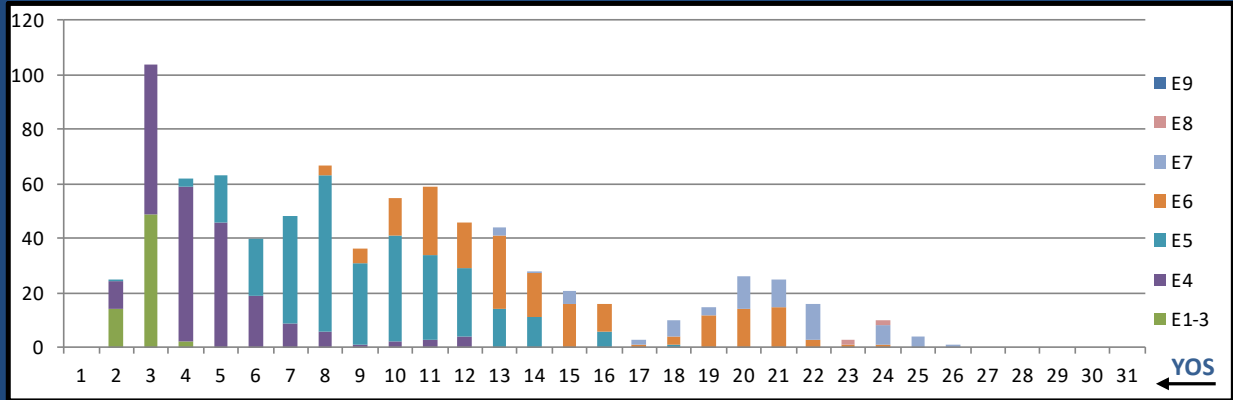
	E1-3	E4	E5	E6	E7	E8	E9	Total
%INV to BA	0%	0%	75%	30%	0%	0%	0%	86%
BA	-	-	4	10	-	-	-	14
Total Inventory	-	-	3	3	4	2	-	12
SJA Inventory	#DIV/0!		43%		#DIV/0!			

L30A HISTO TECH



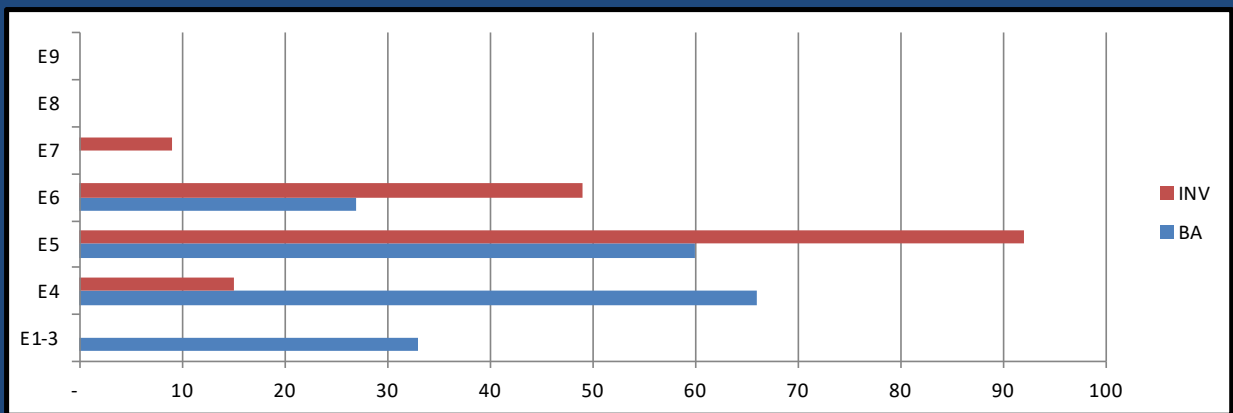
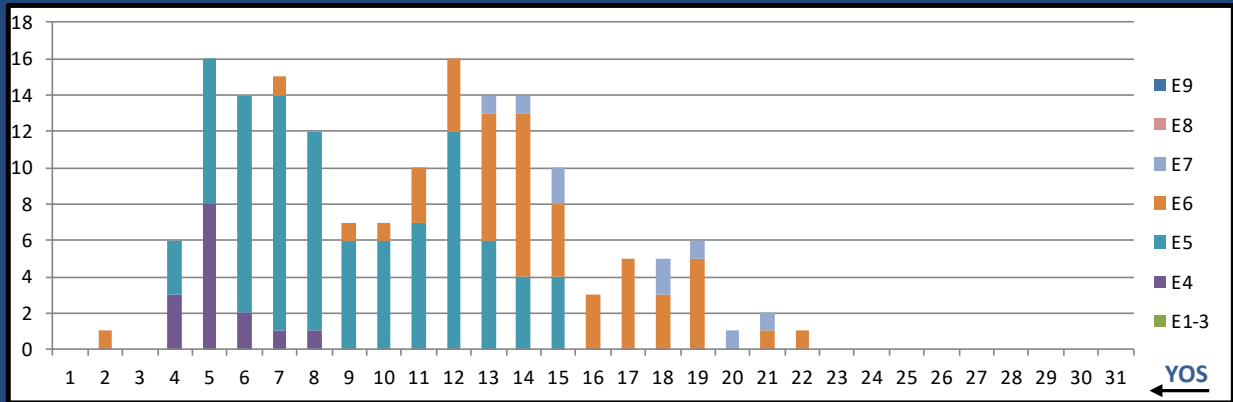
	E1-3	E4	E5	E6	E7	E8	E9	Total
%INV to BA	0%	60%	65%	29%	200%	0%	0%	60%
BA	-	5	17	7	1	-	-	30
Total Inventory	-	3	11	2	2	-	-	18
SJA Inventory	60%	54%		200%				

L31A MED LAB TECH



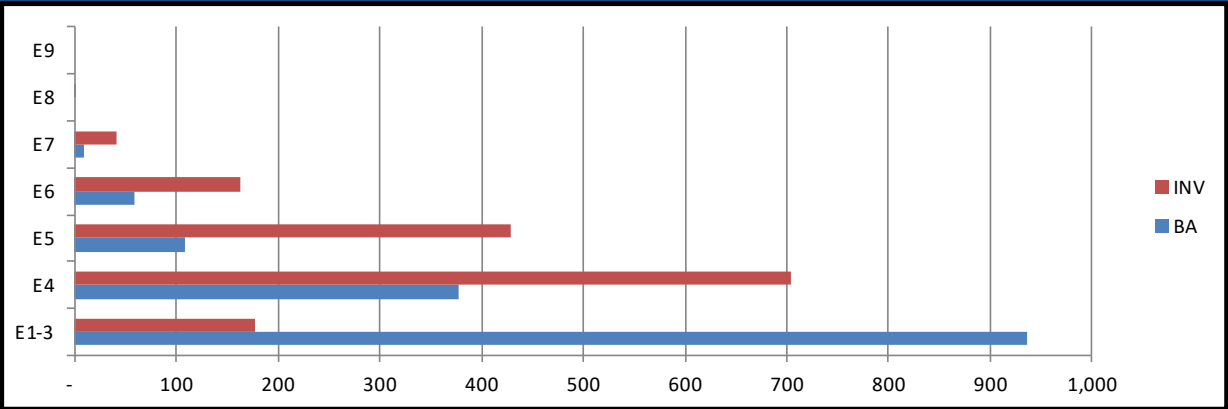
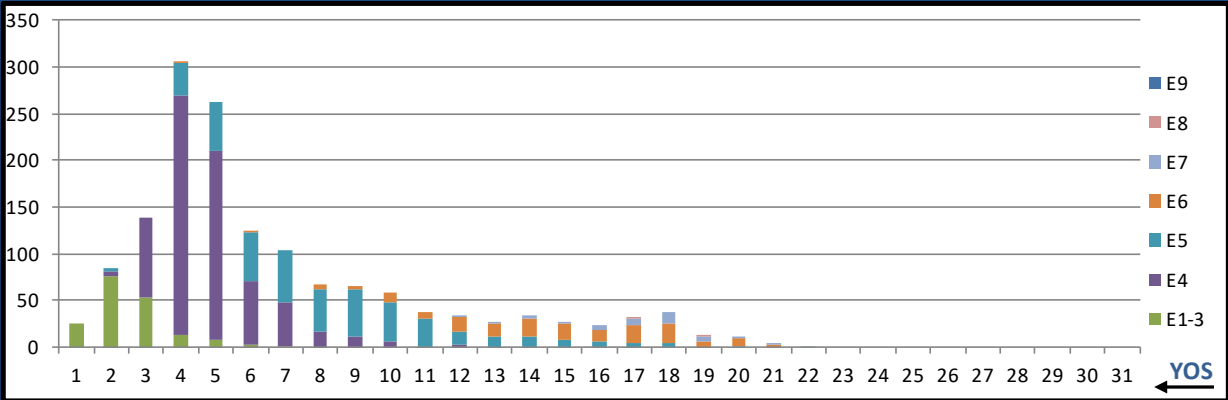
	E1-3	E4	E5	E6	E7	E8	E9	Total
%INV to BA	56%	66%	78%	81%	146%	0%	0%	76%
BA	116	319	379	228	46	-	-	1,088
Total Inventory	65	212	295	184	67	4	-	827
SJA Inventory	64%		79%		154%			

L32A RESP THER TECH



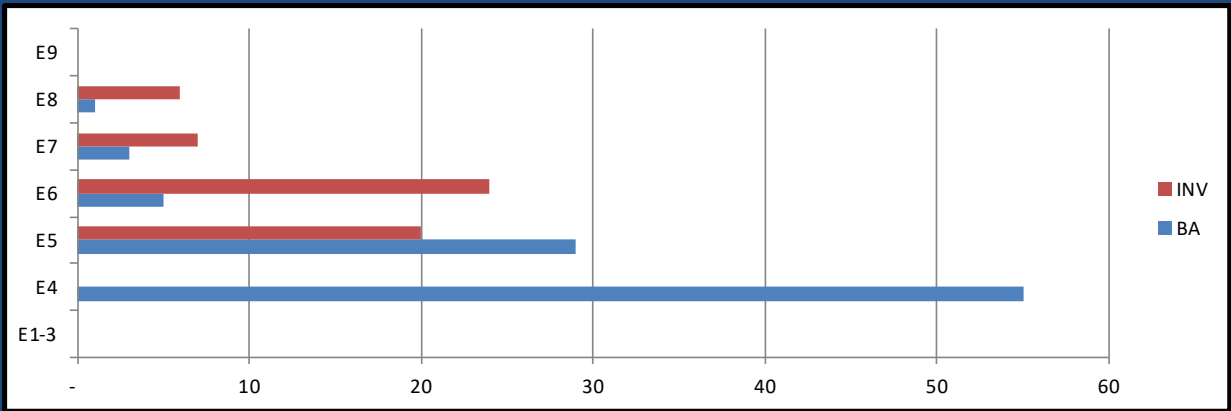
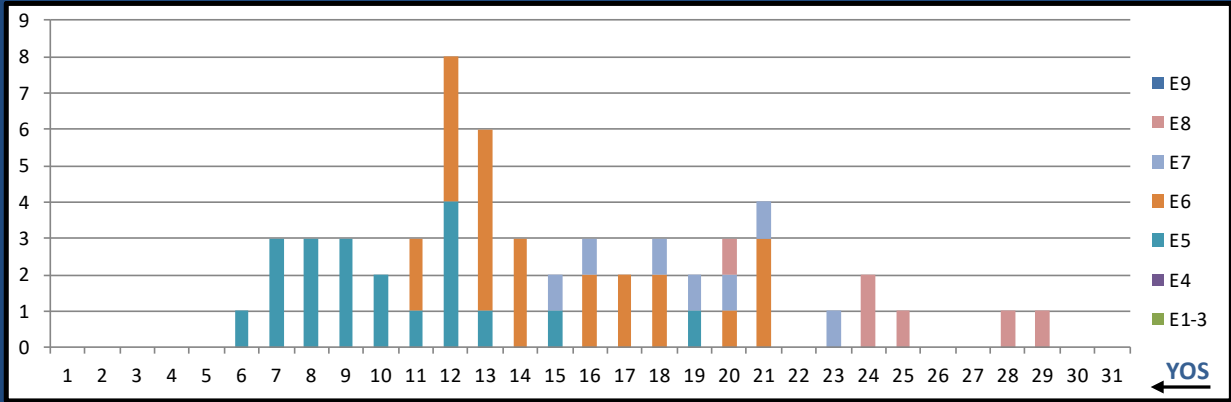
	E1-3	E4	E5	E6	E7	E8	E9	Total
%INV to BA	0%	23%	153%	181%	0%	0%	0%	89%
BA	33	66	60	27	-	-	-	186
Total Inventory	-	15	92	49	9	-	-	165
SJA Inventory	15%		162%			#DIV/0!		

L33A DENTAL ASSISTANT



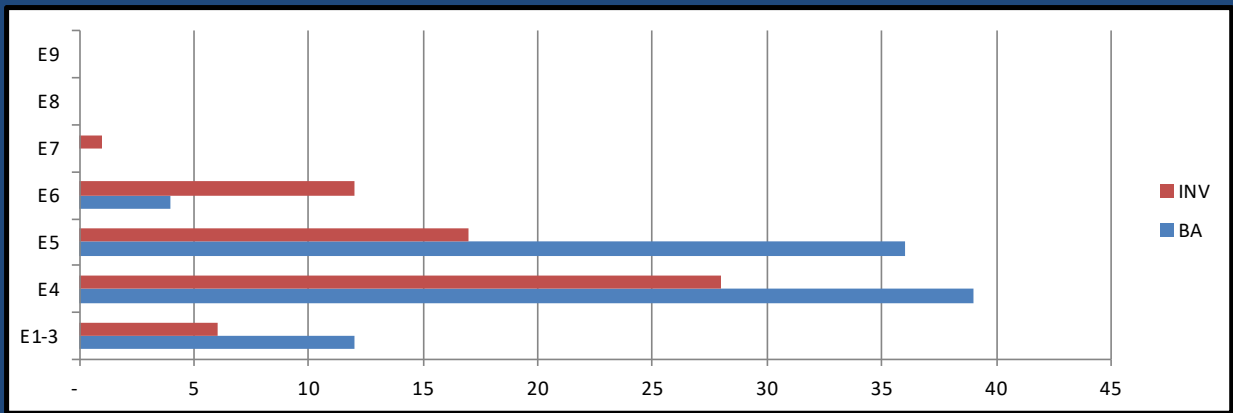
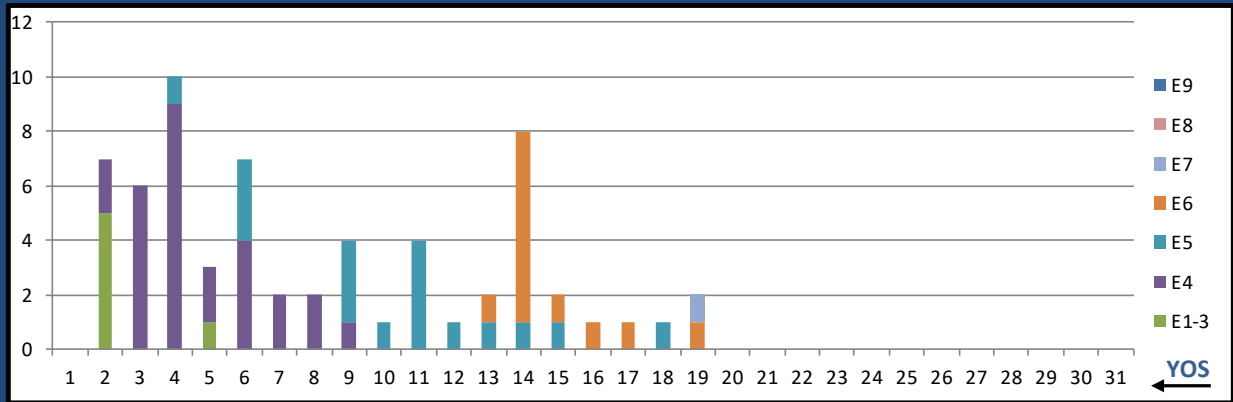
	E1-3	E4	E5	E6	E7	E8	E9	Total
%INV to BA	19%	186%	396%	276%	410%	0%	0%	102%
BA	936	378	108	59	10	-	-	1,491
Total Inventory	178	704	428	163	41	2	-	1,516
SJA Inventory	67%		354%		430%			

L35A DENTAL HYGIENIST



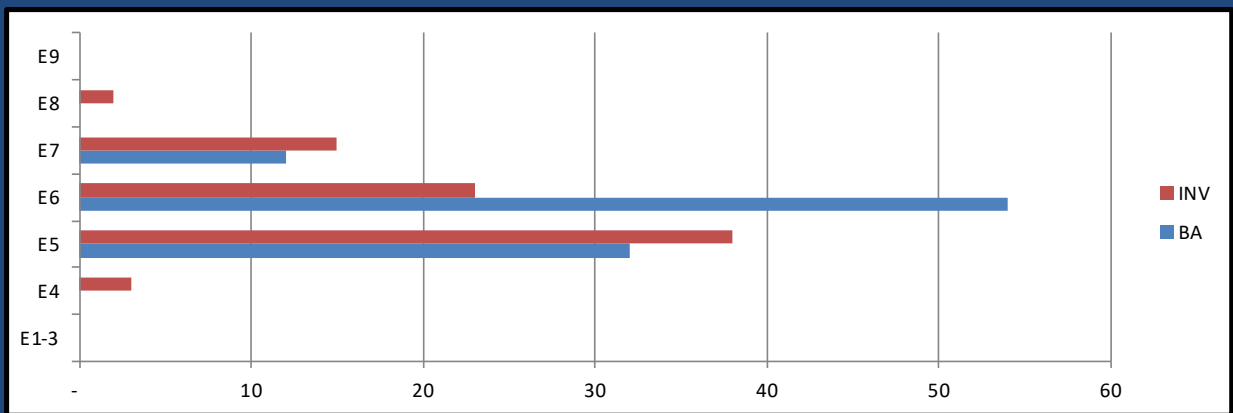
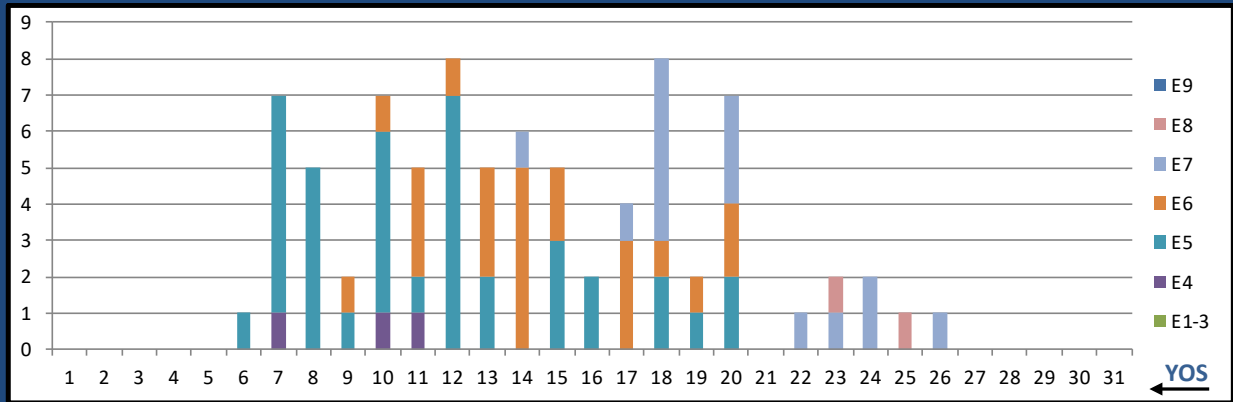
	E1-3	E4	E5	E6	E7	E8	E9	Total
%INV to BA	0%	0%	69%	480%	233%	600%	0%	61%
BA	-	55	29	5	3	1	-	93
Total Inventory	-	-	20	24	7	6	-	57
SJA Inventory	0%		129%		325%			

L36A DENTAL LAB BASIC



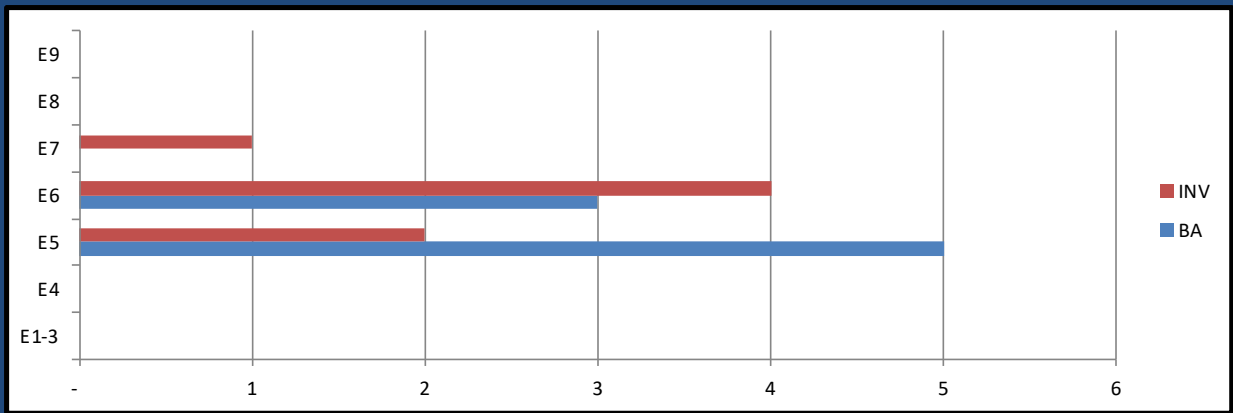
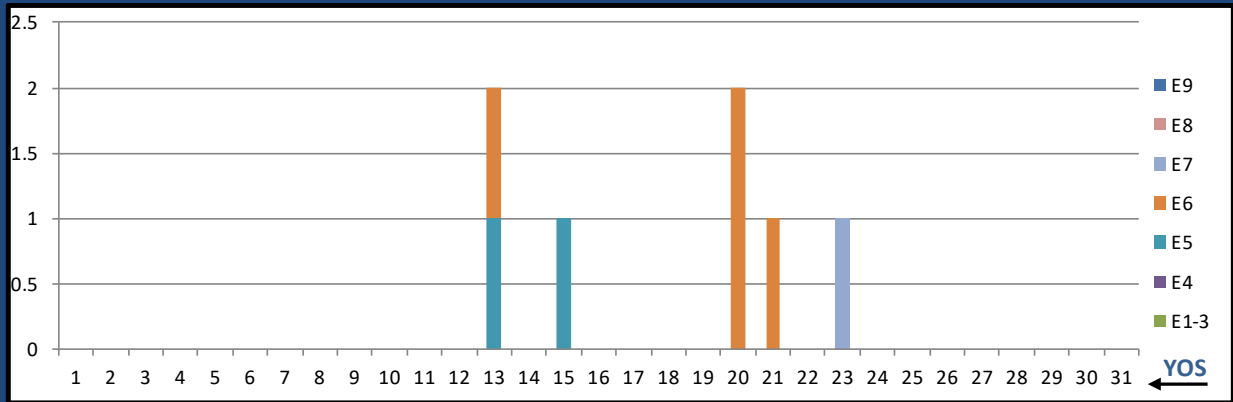
	E1-3	E4	E5	E6	E7	E8	E9	Total
%INV to BA	50%	72%	47%	300%	0%	0%	0%	70%
BA	12	39	36	4	-	-	-	91
Total Inventory	6	28	17	12	1	-	-	64
SJA Inventory	67%		73%		#DIV/0!			

L37A DENTAL LAB ADV



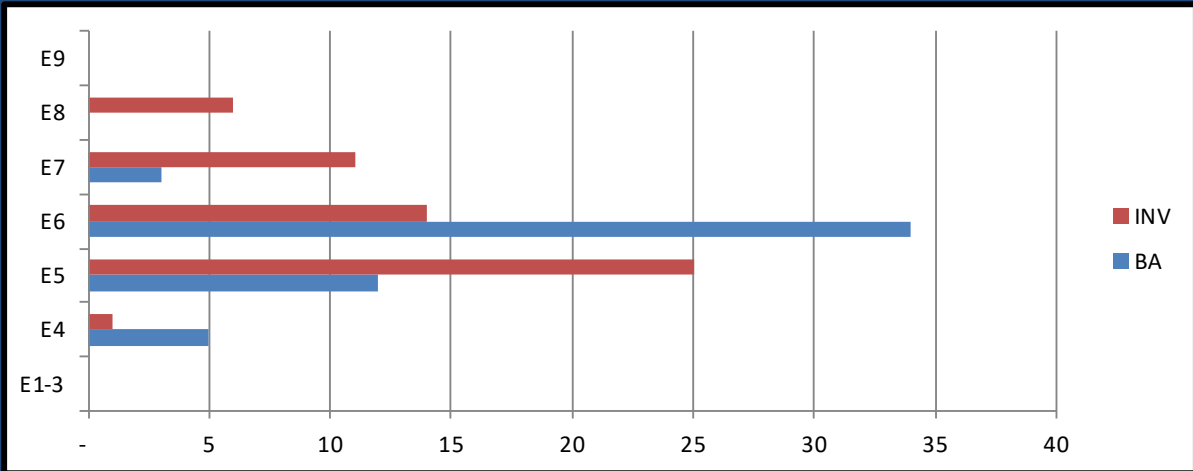
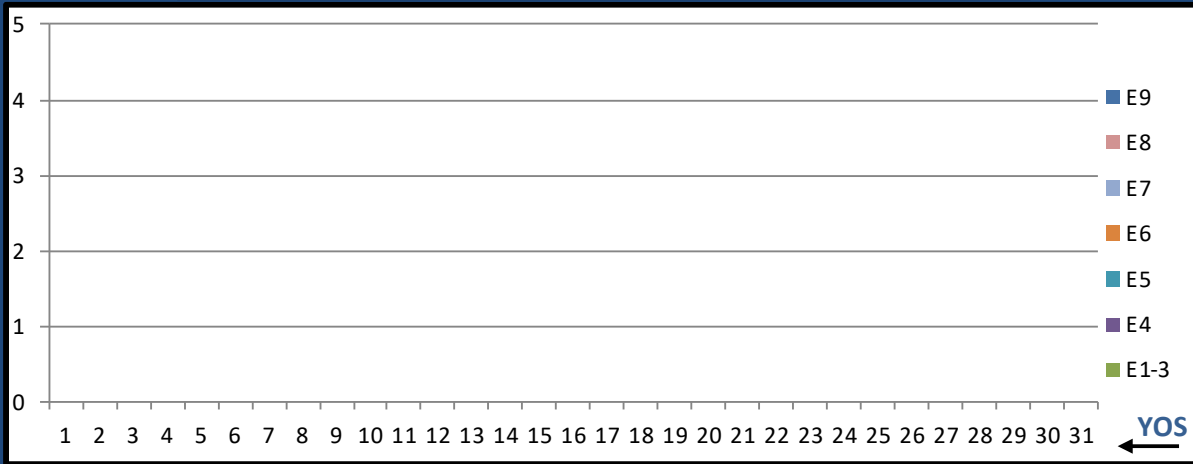
	E1-3	E4	E5	E6	E7	E8	E9	Total
%INV to BA	0%	0%	119%	43%	125%	0%	0%	83%
BA	-	-	32	54	12	-	-	98
Total Inventory	-	3	38	23	15	2	-	81
SJA Inventory	#DIV/0!		71%		142%			

L38A DENTAL ORALMAX



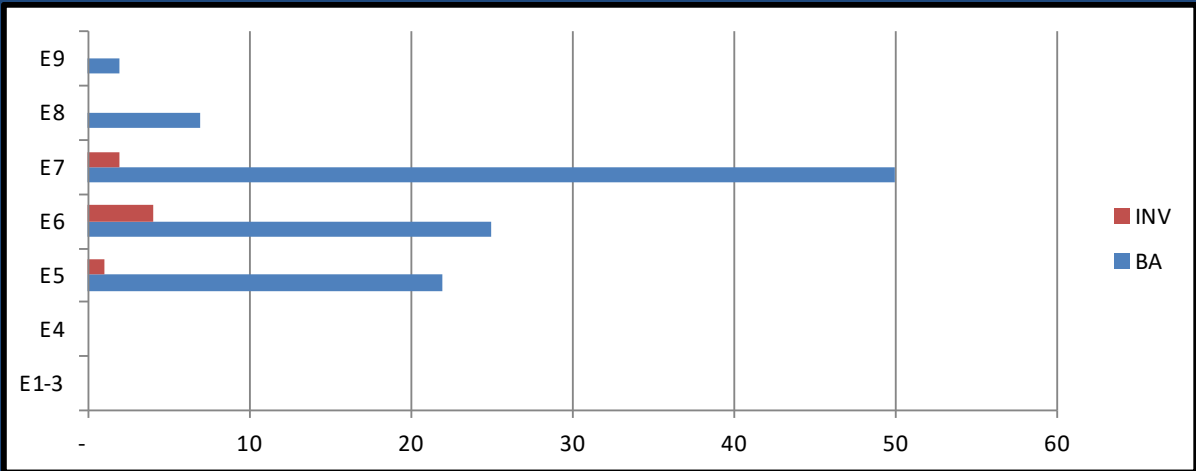
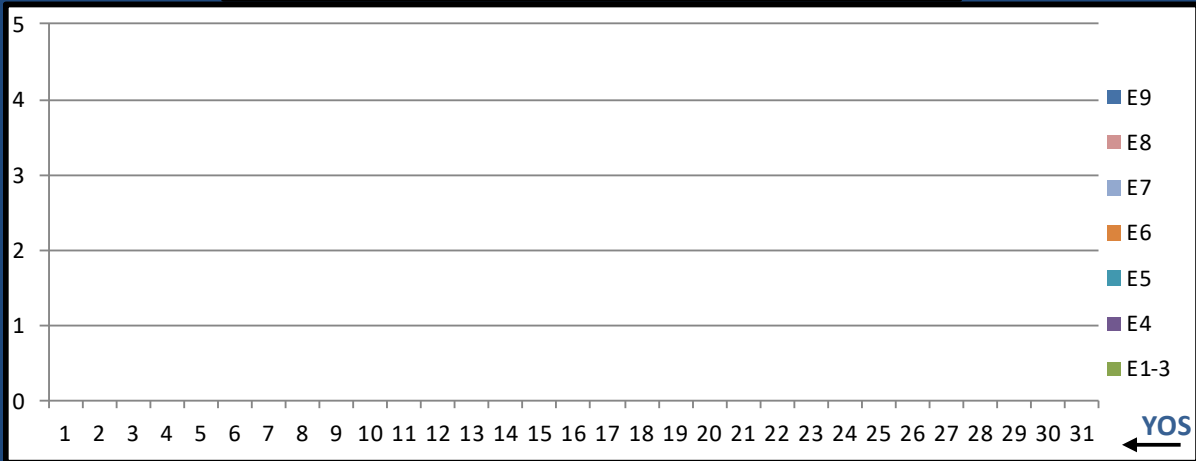
	E1-3	E4	E5	E6	E7	E8	E9	Total
%INV to BA	0%	0%	40%	133%	0%	0%	0%	88%
BA	-	-	5	3	-	-	-	8
Total Inventory	-	-	2	4	1	-	-	7
SJA Inventory	#DIV/0!		75%		#DIV/0!			

810B DRUG & ALCOHOL COUNSELOR INTERN



	E1-3	E4	E5	E6	E7	E8	E9	Total
%INV to BA	0%	20%	208%	41%	367%	0%	0%	106%
BA	-	5	12	34	3	-	-	54
Total Inventory	-	1	25	14	11	6	-	57
SJA Inventory	20%		85%		567%			

810C DRUG & ALCOHOL COUNSELOR



	E1-3	E4	E5	E6	E7	E8	E9	Total
%INV to BA	0%	0%	5%	16%	4%	0%	0%	7%
BA	-	-	22	25	50	7	2	106
Total Inventory	-	-	1	4	2	-	-	7
SJA Inventory	#DIV/0!		11%		3%			

MAY 2024 HM MANNING SNAPSHOT

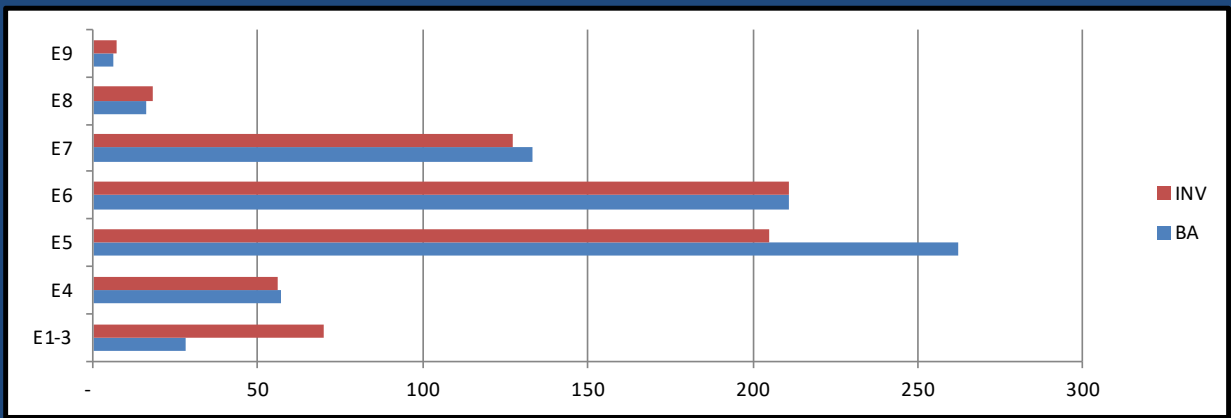
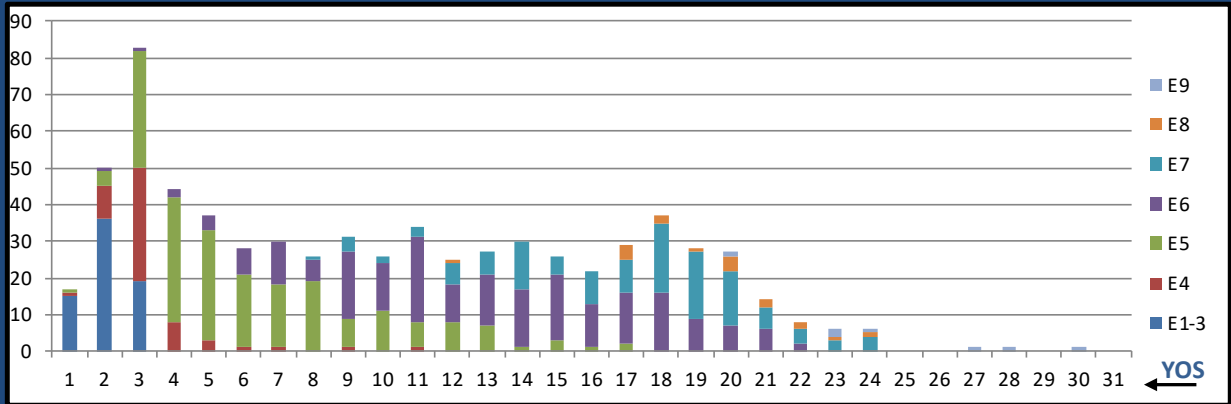
HM TAR MANNING 10 MAY 2024	NEC	BA	INV WITH PRIMARY NEC	INV/BA PRIMARY NEC	TOTAL INV W/NEC	TOTAL NEC INV/BA
FIELD MED TECH	L03A	181	230	127.1%	275	151.9%
AERO MED TECH	L04A	41	88	214.6%	88	214.6%
SURFACE IDC	L10A	26	24	92.3%	24	92.3%
PREV MED TECH	L12A	1	3	300.0%	3	300.0%
PHARM TECH	L22A	0	2	#DIV/0!	2	#DIV/0!
DENTAL ASSISTANT	L33A	0	2	#DIV/0!	2	#DIV/0!
DRUG & ALCOHOL COUNS. INTERN	810B	0	0	#DIV/0!	0	#DIV/0!

General Duty HM	0000/L03A	645	577	89.5%
NECS (less L03A)	NEC	68	117	172.1%
NOS L500 TOTAL	ALL	713	694	97.3%

Critically Undermanned <85%	Undermanned 85%-94%	Healthy 95%-104%	Overmanned >105%
-----------------------------	---------------------	------------------	------------------

MAY 2024 HM MANNING SNAPSHOT

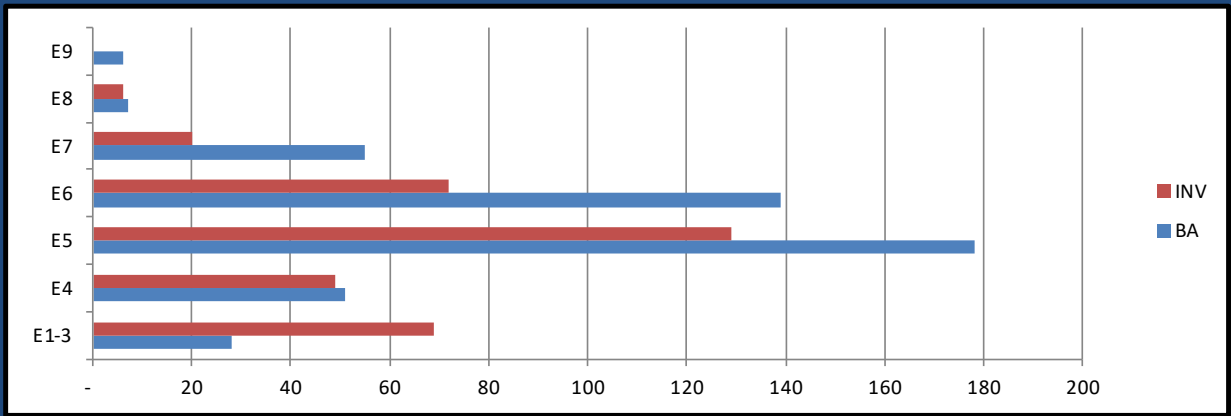
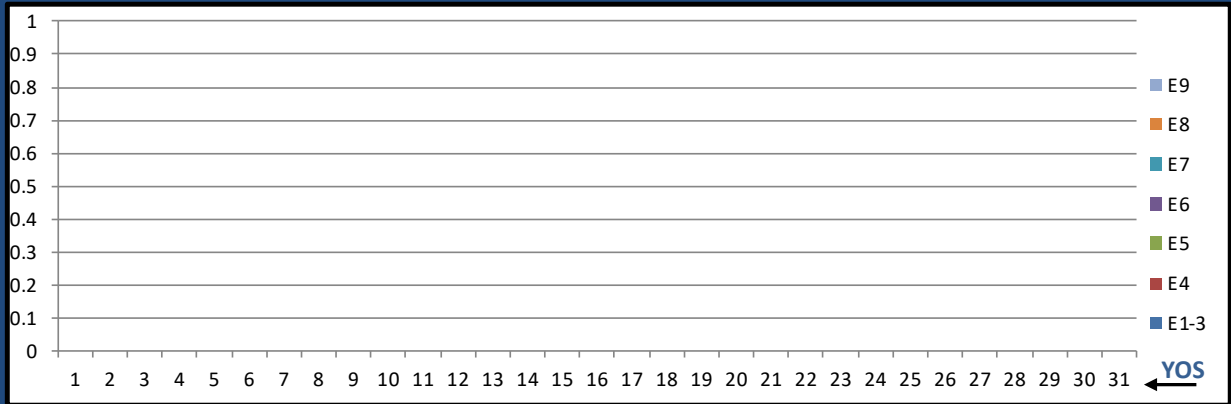
TAR ALL



	E1-3	E4	E5	E6	E7	E8	E9	Total
%INV to BA	250%	98%	78%	100%	95%	113%	117%	97%
BA	28	57	262	211	133	16	6	713
Total Inventory	70	56	205	211	127	18	7	694
SJA Inventory	148%		88%		98%			

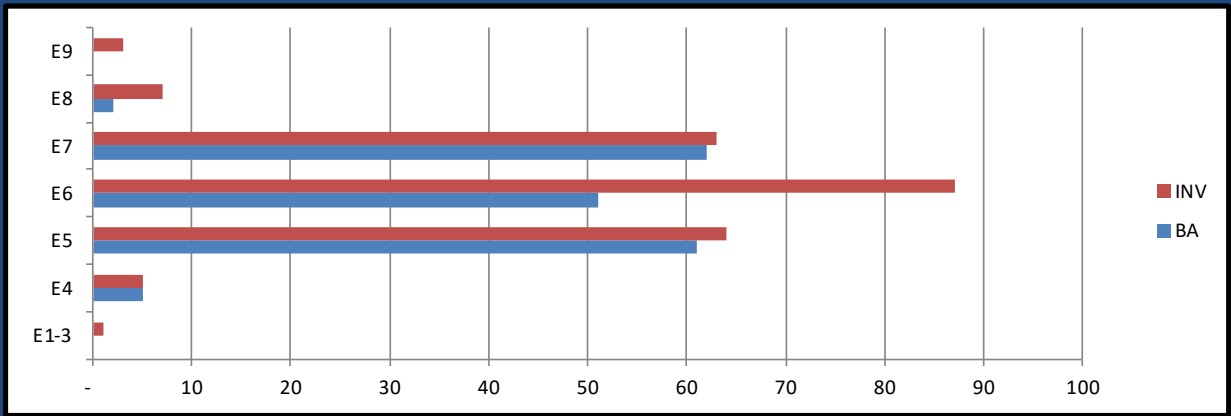
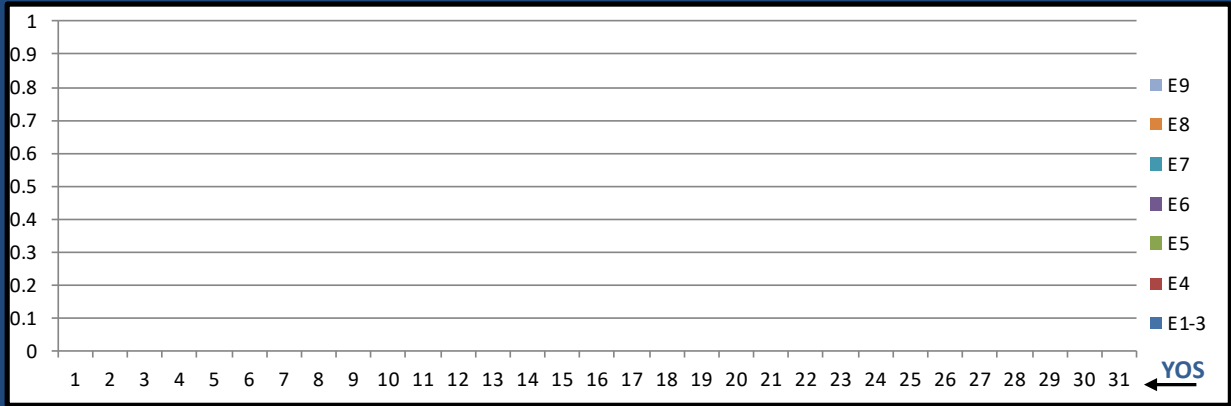
MAY 2024 HM MANNING SNAPSHOT

TAR 0000



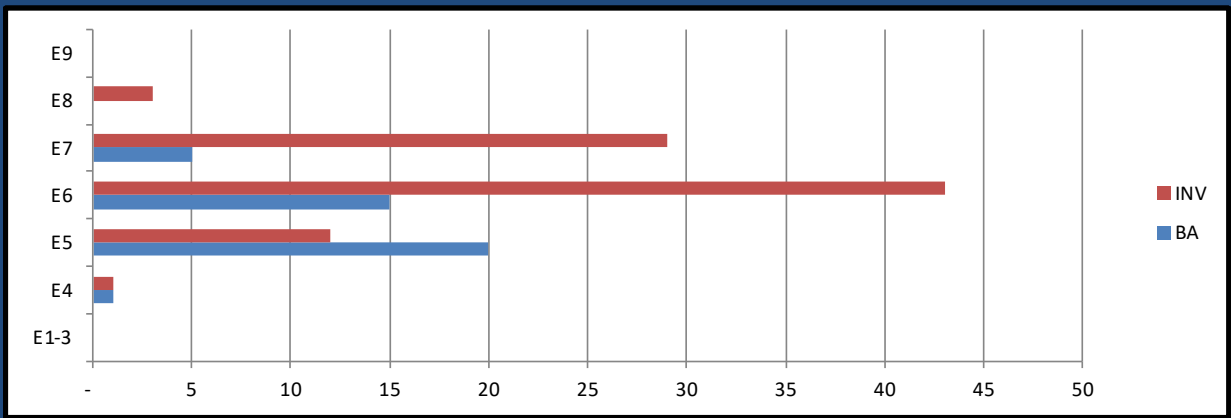
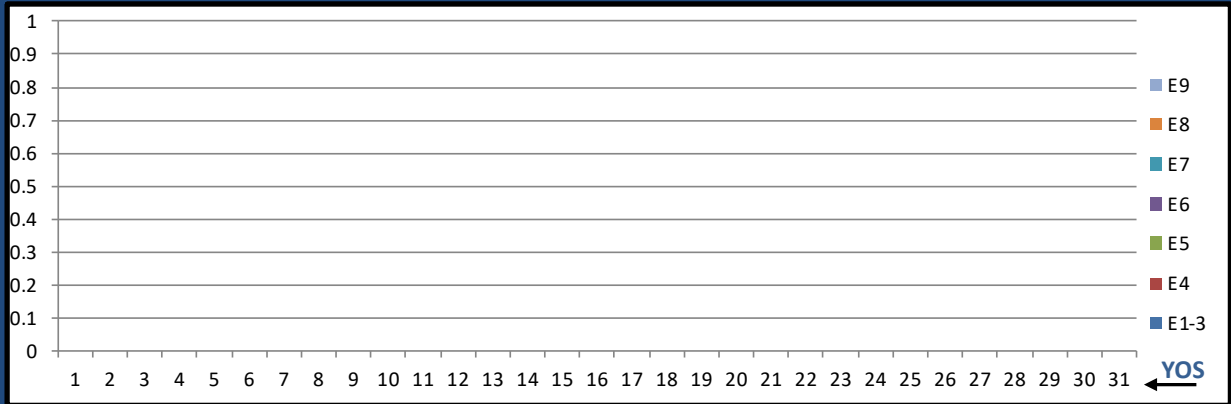
	E1-3	E4	E5	E6	E7	E8	E9	Total
%INV to BA	246%	96%	72%	52%	36%	86%	0%	74%
BA	28	51	178	139	55	7	6	464
Total Inventory	69	49	129	72	20	6	-	345
SJA Inventory	149%		63%			38%		

TAR L03A FLD MED TECH



	E1-3	E4	E5	E6	E7	E8	E9	Total
%INV to BA	0%	100%	105%	171%	102%	350%	0%	127%
BA	-	5	61	51	62	2	-	181
Total Inventory	1	5	64	87	63	7	3	230
SJA Inventory	120%		135%		114%			

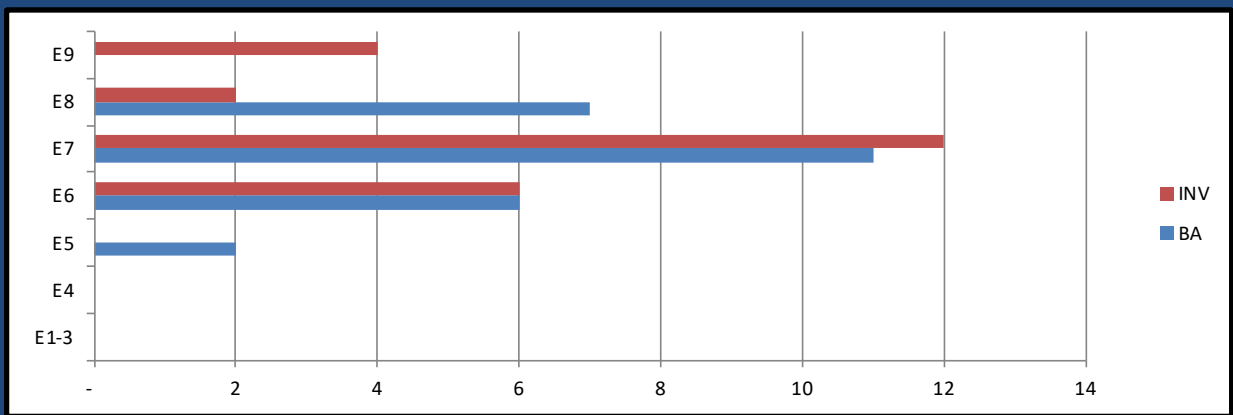
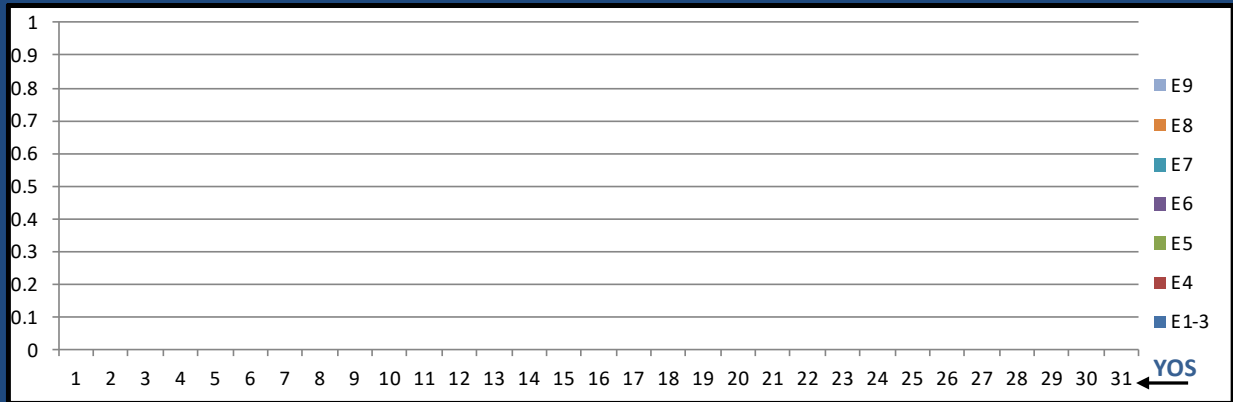
TAR L04A AERO MED TECH



	E1-3	E4	E5	E6	E7	E8	E9	Total
%INV to BA	0%	100%	60%	287%	580%	0%	0%	215%
BA	-	1	20	15	5	-	-	41
Total Inventory	-	1	12	43	29	3	-	88
SJA Inventory	100%		157%		640%			

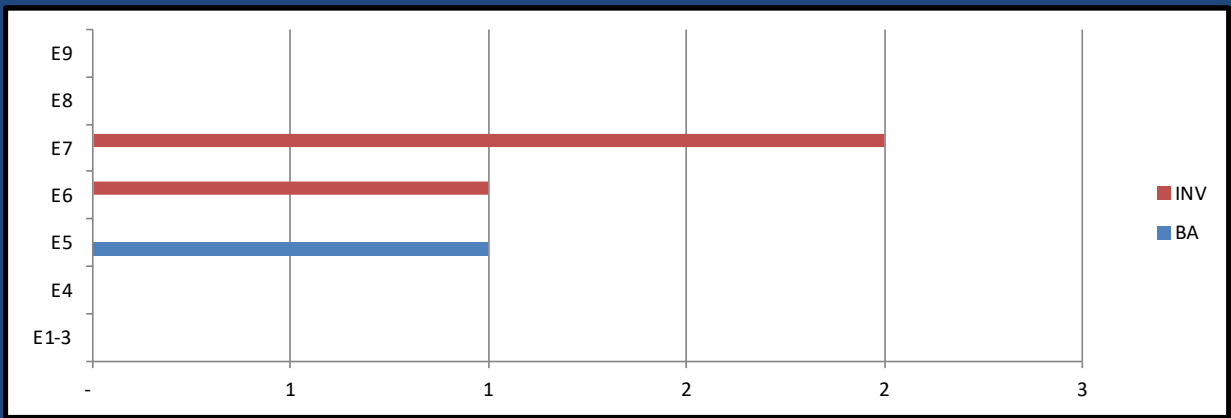
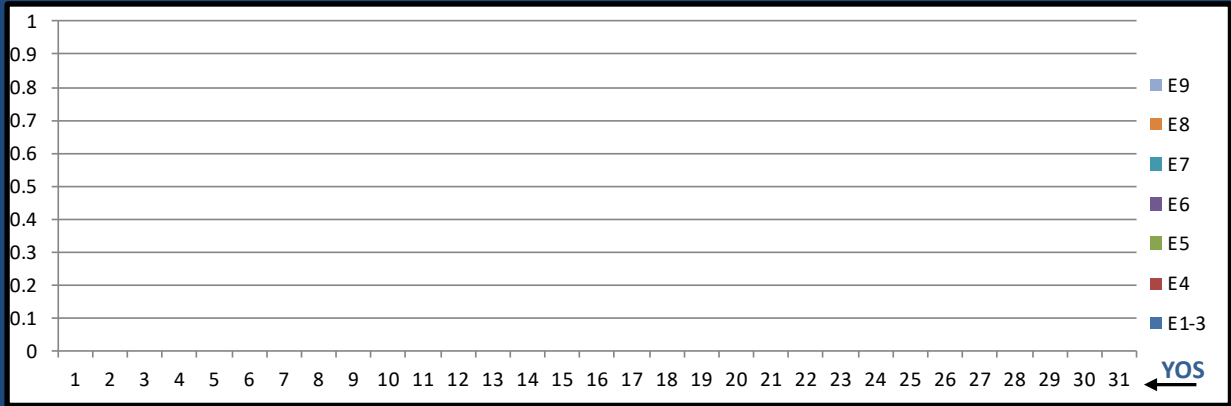
MAY 2024 HM MANNING SNAPSHOT

TAR L10A SURFACE FORCE IDC



	E1-3	E4	E5	E6	E7	E8	E9	Total
%INV to BA	0%	0%	0%	100%	109%	29%	0%	92%
BA	-	-	2	6	11	7	-	26
Total Inventory	-	-	-	6	12	2	4	24
SJA Inventory	#DIV/0!		75%		100%			

TAR L12A PREV MED TECH



	E1-3	E4	E5	E6	E7	E8	E9	Total
%INV to BA	0%	0%	0%	0%	0%	0%	0%	300%
BA	-	-	1	-	-	-	-	1
Total Inventory	-	-	-	1	2	-	-	3
SJA Inventory	#DIV/0!		100%		#DIV/0!			